

Springfield to Quantico Enhanced Public Transportation Feasibility Study

Technical Advisory Committee Meeting #6
April 15, 2021

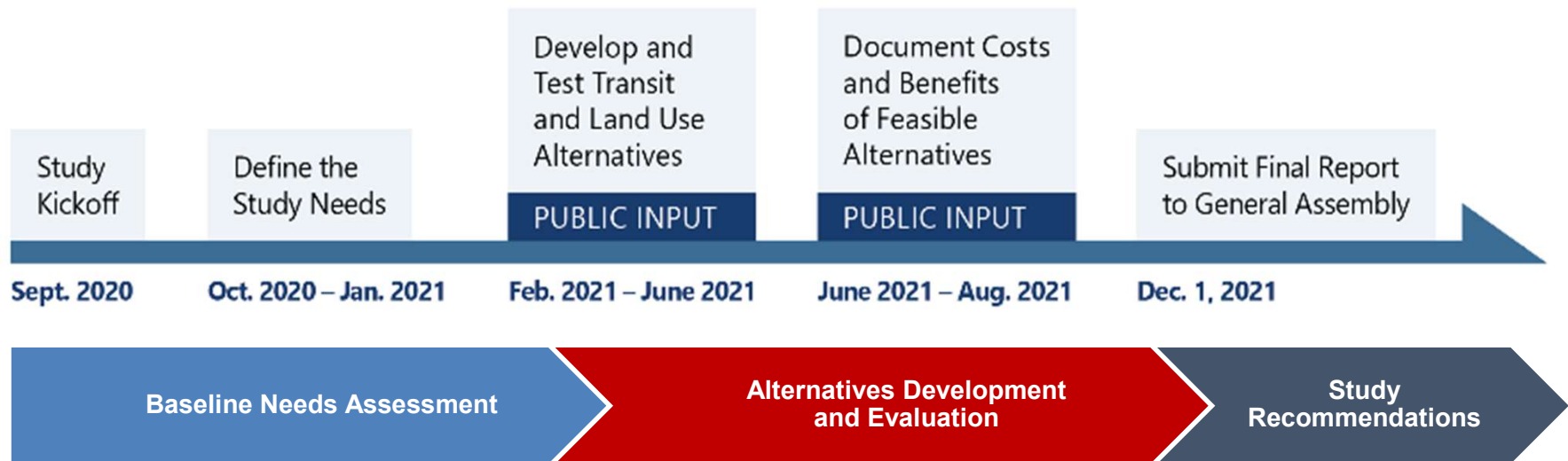


Virginia Department of Rail and Public Transportation

Meeting Agenda

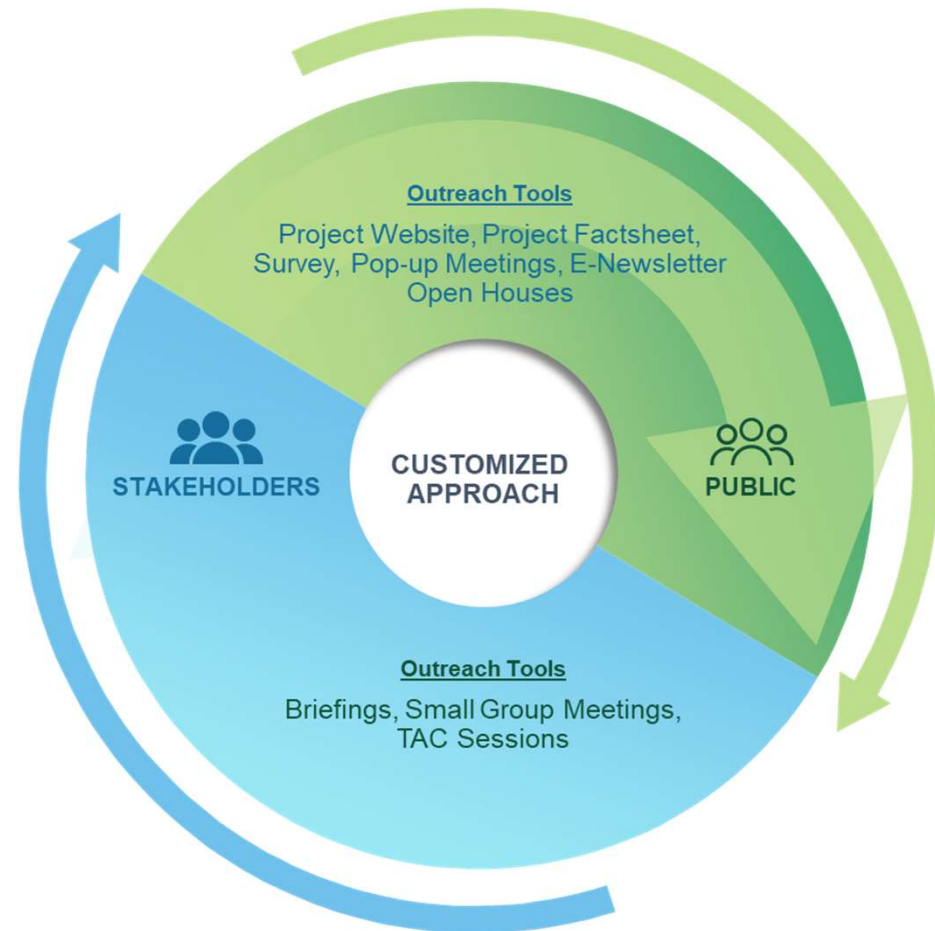
- Introductions / Welcome
- Public Outreach Status & Next Steps
- Land Use Assessment
- Alternatives Development
- Next Steps – Future TAC Meetings

Study Schedule



Public Outreach Status

- Completed Activities
 - DRPT Website Launched
 - Project Factsheet
 - On-Line Survey Launched April 12th – will stay open until May 15th
- Upcoming Activities
 - Virtual Public Meeting
 - May 4th, 6-8pm



<http://www.drpt.virginia.gov/transit/springfield-to-quantico/>

Virtual Public Meeting - Agenda

- Presentation (30 mins)
 - Study Background, Objectives, and Approach
 - Existing and Planned Transportation Network and Conditions
 - Existing and Planned Land Use
 - Expected Baseline Growth
 - Transit Needs in the Corridor
 - Potential Enhanced Transit Options
- Large group Q&A (20 mins)
- Break (5 mins)
- Small Group Breakout Discussion (30 mins)
 - Transit Improvement Needs
 - Potential Enhanced Transit Options
- Wrap-up (15 mins)

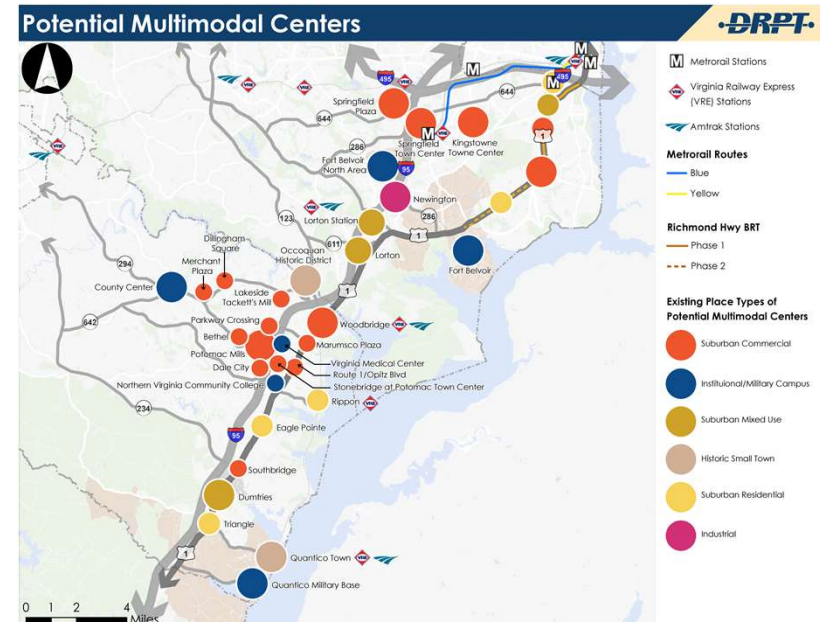
Corridor Land Use Assessment

Current Activities:

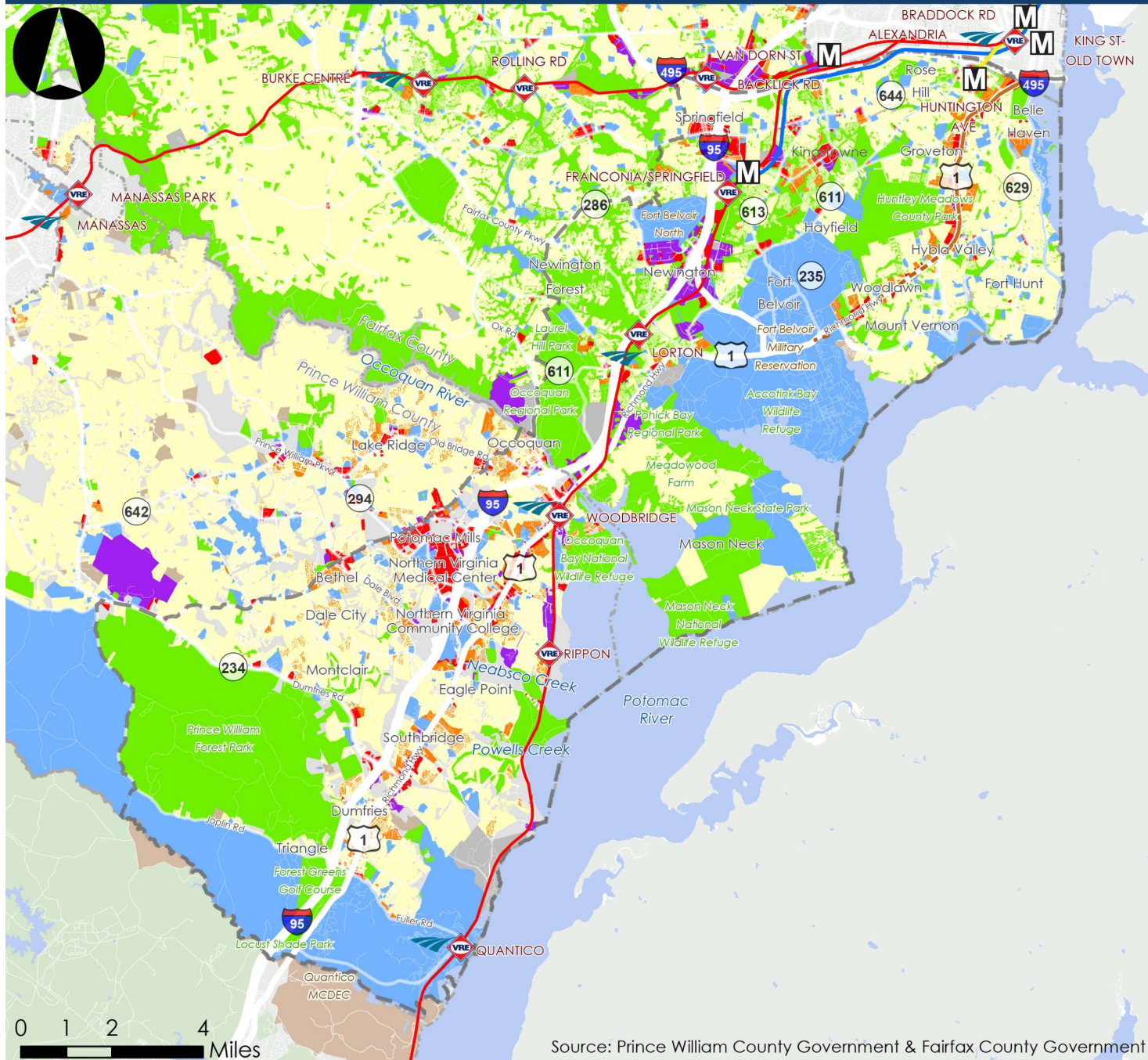
- Coordination with County Planning Staff
- Compilation of Existing Land Use Information and Data Files
- Identification of Potential Multimodal Centers by Type

Upcoming Work:

- Existing Conditions Analysis for Station Areas (Up to 10)
- Station Area/Multimodal Center Planning for Station Areas (Up to 10)
- Development of Alternative Land Use Scenarios
- Modeling and Testing of Transit and Land Use Scenarios



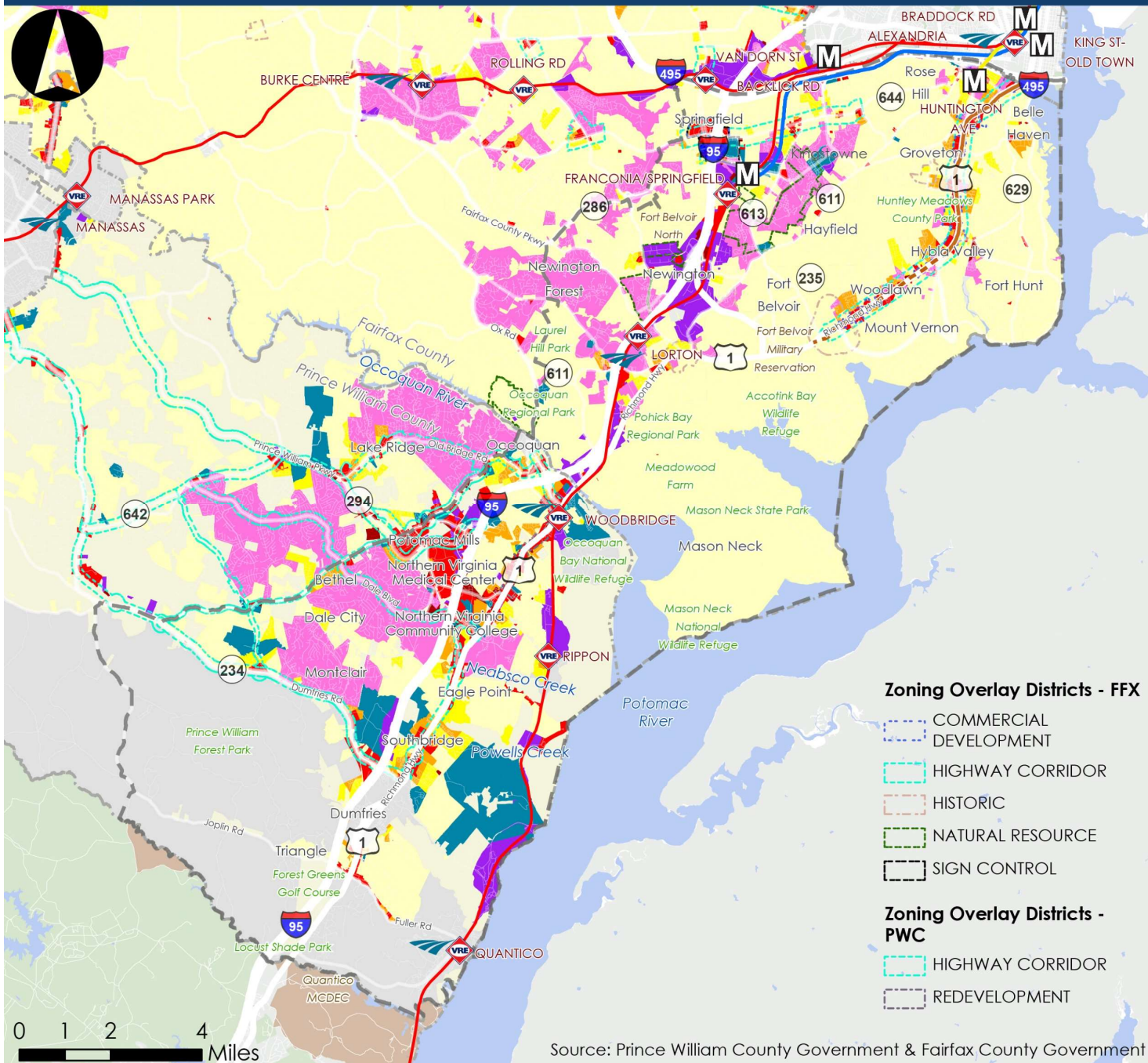
Existing Land Use



- M** Metrorail Stations
- VRE** Virginia Railway Express (VRE) Stations
- Amtrak Stations
- VRE & Amtrak Routes
- Metrorail Routes**
 - Blue
 - Yellow
- Richmond Hwy BRT**
 - Phase 1
 - - -** Phase 2
- []** Study Area
- []** Counties
- Existing Land Use**
 - Commercial
 - Industrial
 - Institutional
 - Residential - Multifamily
 - Residential - Single Family
 - Agricultural
 - Open Space/Recreation
 - Utilities/Transportation
 - Vacant
 - ROW

Source: Prince William County Government & Fairfax County Government

Zoning



- M** Metrorail Stations
- VRE** Virginia Railway Express (VRE) Stations
- Amtrak Stations
- VRE & Amtrak Routes

Metrorail Routes

- Blue
- Yellow

Richmond Hwy BRT

- Phase 1
- Phase 2

[] Study Area

Counties

Zoning

- Commercial/Retail
- Commercial/Office
- Industrial
- Planned Development - Mixed Use
- Planned Development - Residential/Mixed Use
- Residential - Multifamily
- Residential - Single Family +Townhome
- Residential - Single Family
- Agricultural
- Other Jurisdiction

Zoning Overlay Districts - FFX

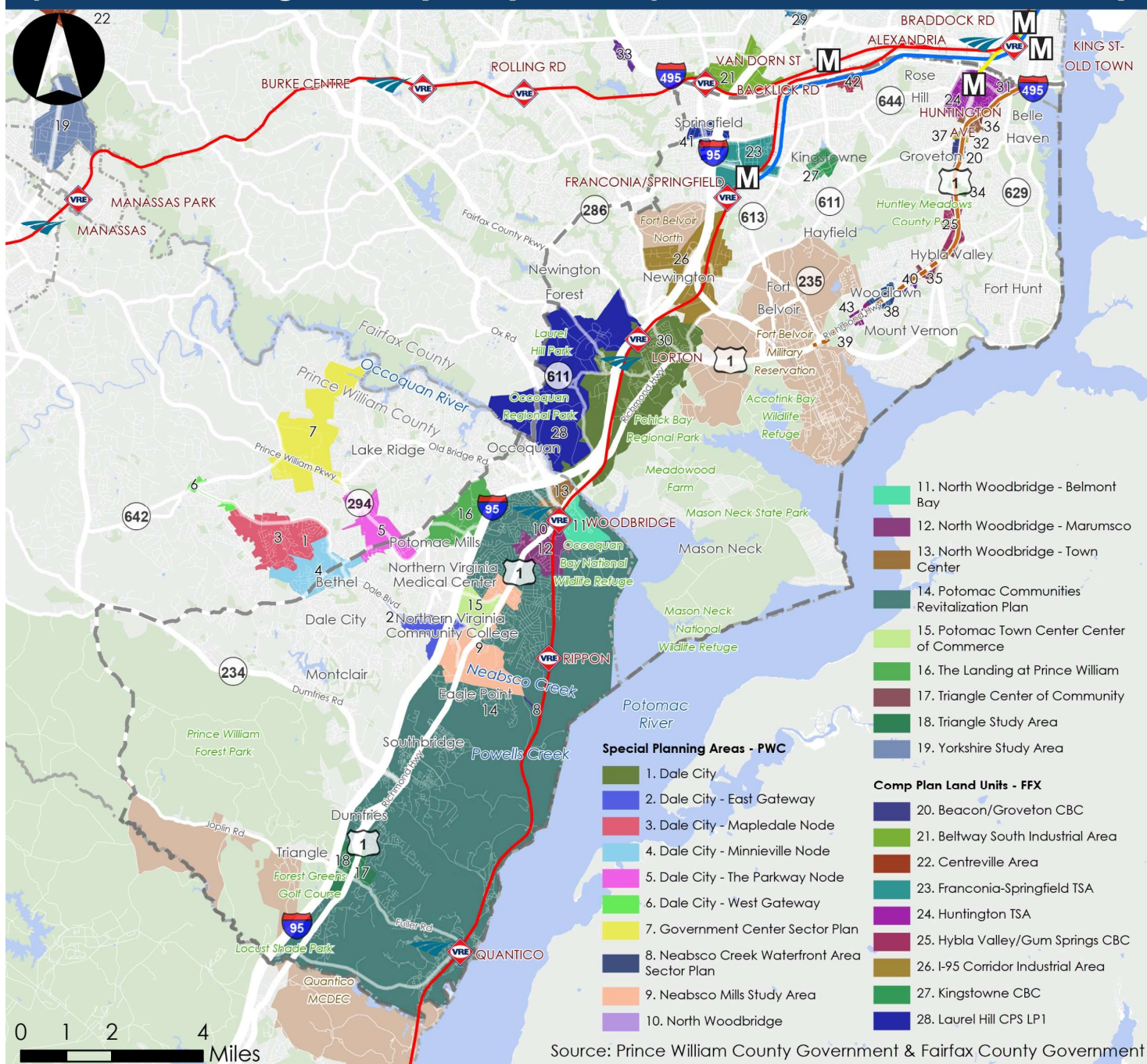
- COMMERCIAL DEVELOPMENT
- HIGHWAY CORRIDOR
- HISTORIC
- NATURAL RESOURCE
- SIGN CONTROL

Zoning Overlay Districts - PWC

- HIGHWAY CORRIDOR
- REDEVELOPMENT

Source: Prince William County Government & Fairfax County Government

Special Planning Areas (PWC) & Comprehensive Plan Land Units (FFX)



- M** Metrorail Stations
- VRE** Virginia Railway Express (VRE) Stations
- Amtrak Stations
- VRE & Amtrak Routes
- Metrorail Routes**
 - Blue
 - Yellow
- Richmond Hwy BRT**
 - Phase 1
 - - -** Phase 2
- []** Study Area
- []** Counties
- 29.** Lincolnia CBC
- 30.** Lorton-South Route 1 Suburban Center
- 31.** North Gateway CBC
- 32.** Penn Daw CBC
- 33.** Ravensworth Industrial Area
- 34.** SNA Beacon/Groveton and Hybla Valley/Gum Springs
- 35.** SNA Hybla Valley/Gum Springs and South County Ctr
- 36.** SNA North Gateway and Penn Daw
- 37.** SNA Penn Daw and Beacon/Groveton
- 38.** SNA South County Center and Woodlawn
- 39.** SNA adjacent to Woodlawn
- 40.** South County Center CBC
- 41.** Springfield CBC
- 42.** Van Dorn TSA
- 43.** Woodlawn CBC

Special Planning Areas - PWC

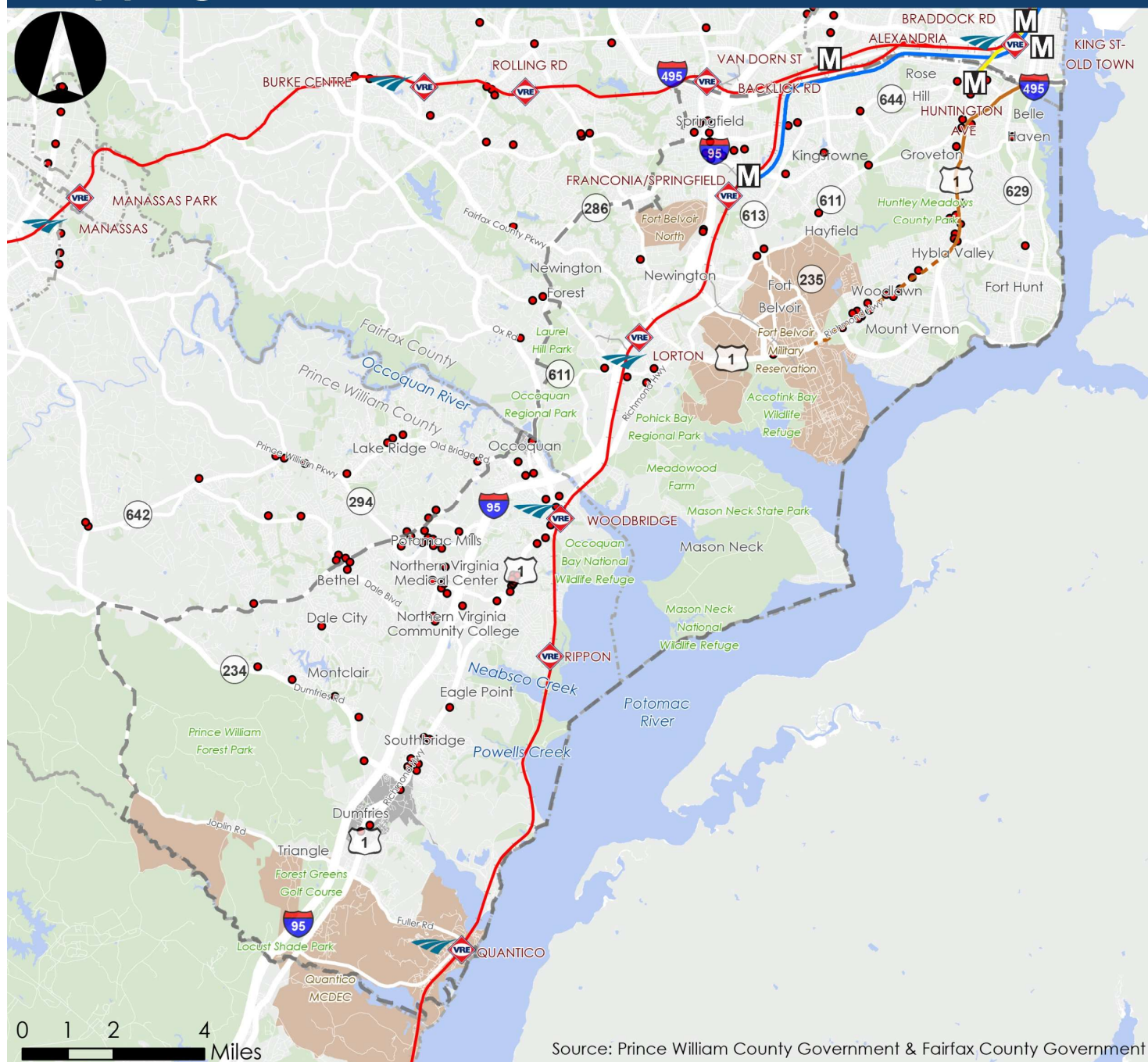
- 1.** Dale City
- 2.** Dale City - East Gateway
- 3.** Dale City - Mapledale Node
- 4.** Dale City - Minnieville Node
- 5.** Dale City - The Parkway Node
- 6.** Dale City - West Gateway
- 7.** Government Center Sector Plan
- 8.** Neabsco Creek Waterfront Area Sector Plan
- 9.** Neabsco Mills Study Area
- 10.** North Woodbridge

Comp Plan Land Units - FFX

- 20.** Beacon/Groveton CBC
- 21.** Beltway South Industrial Area
- 22.** Centreville Area
- 23.** Franconia-Springfield TSA
- 24.** Huntington TSA
- 25.** Hybla Valley/Gum Springs CBC
- 26.** I-95 Corridor Industrial Area
- 27.** Kingstowne CBC
- 28.** Laurel Hill CPS LP1

Source: Prince William County Government & Fairfax County Government

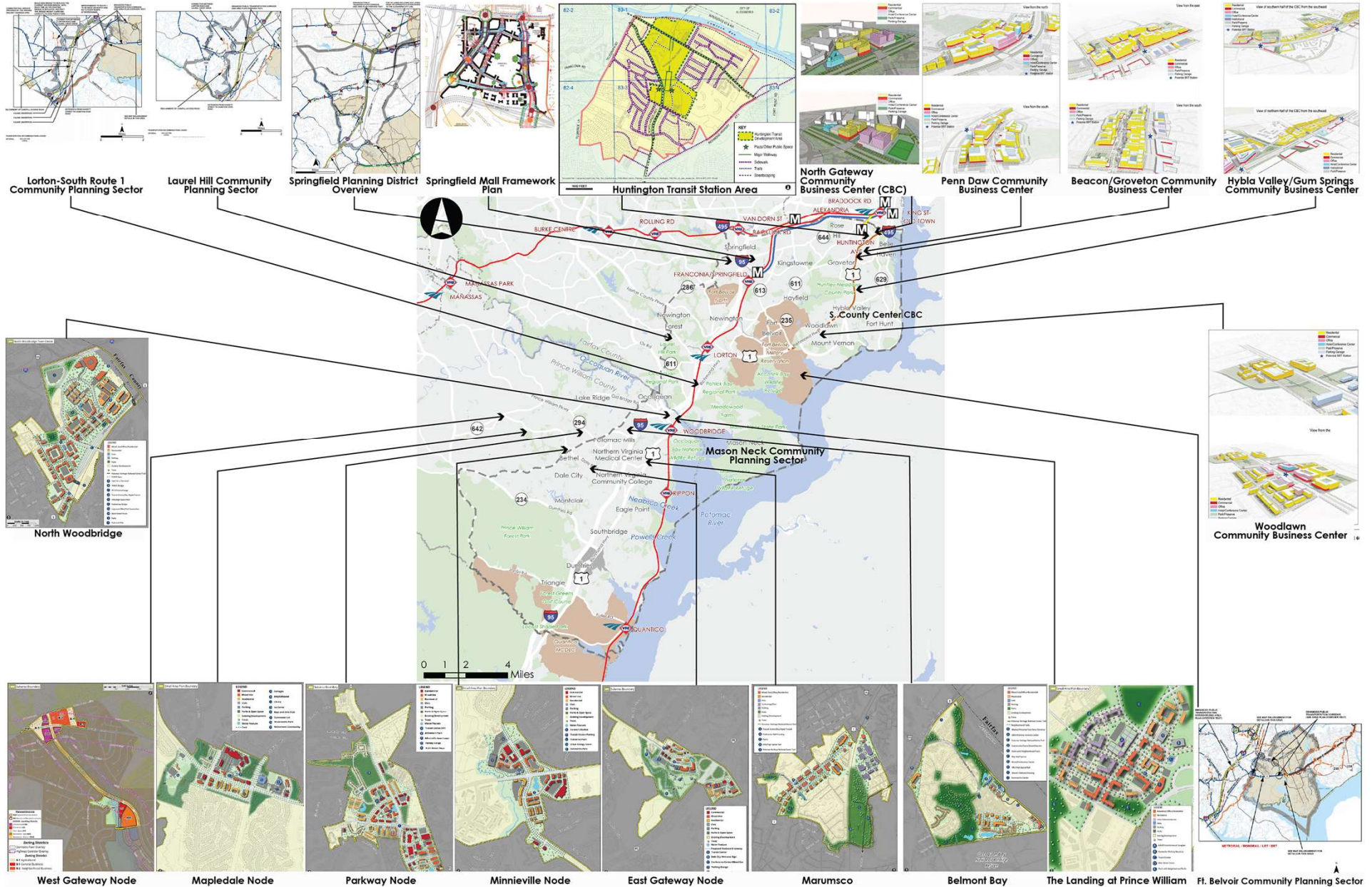
Shopping Centers



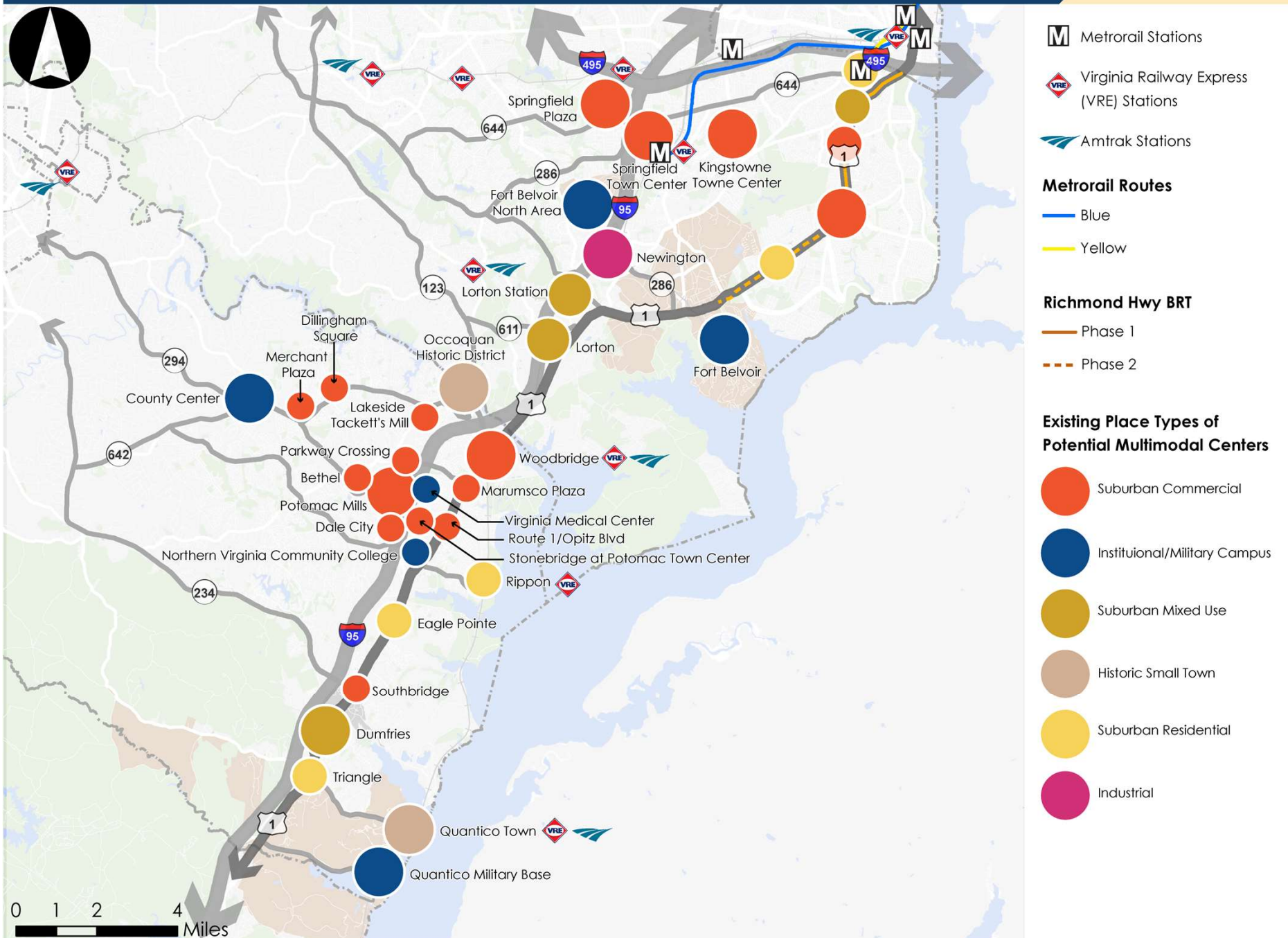
- M** Metrorail Stations
- VRE** Virginia Railway Express (VRE) Stations
- Amtrak Stations
- VRE & Amtrak Routes
- Metrorail Routes**
 - Blue
 - Yellow
- Richmond Hwy BRT**
 - Phase 1
 - - -** Phase 2
- []** Study Area
- []** Counties
- Shopping Centers

Source: Prince William County Government & Fairfax County Government

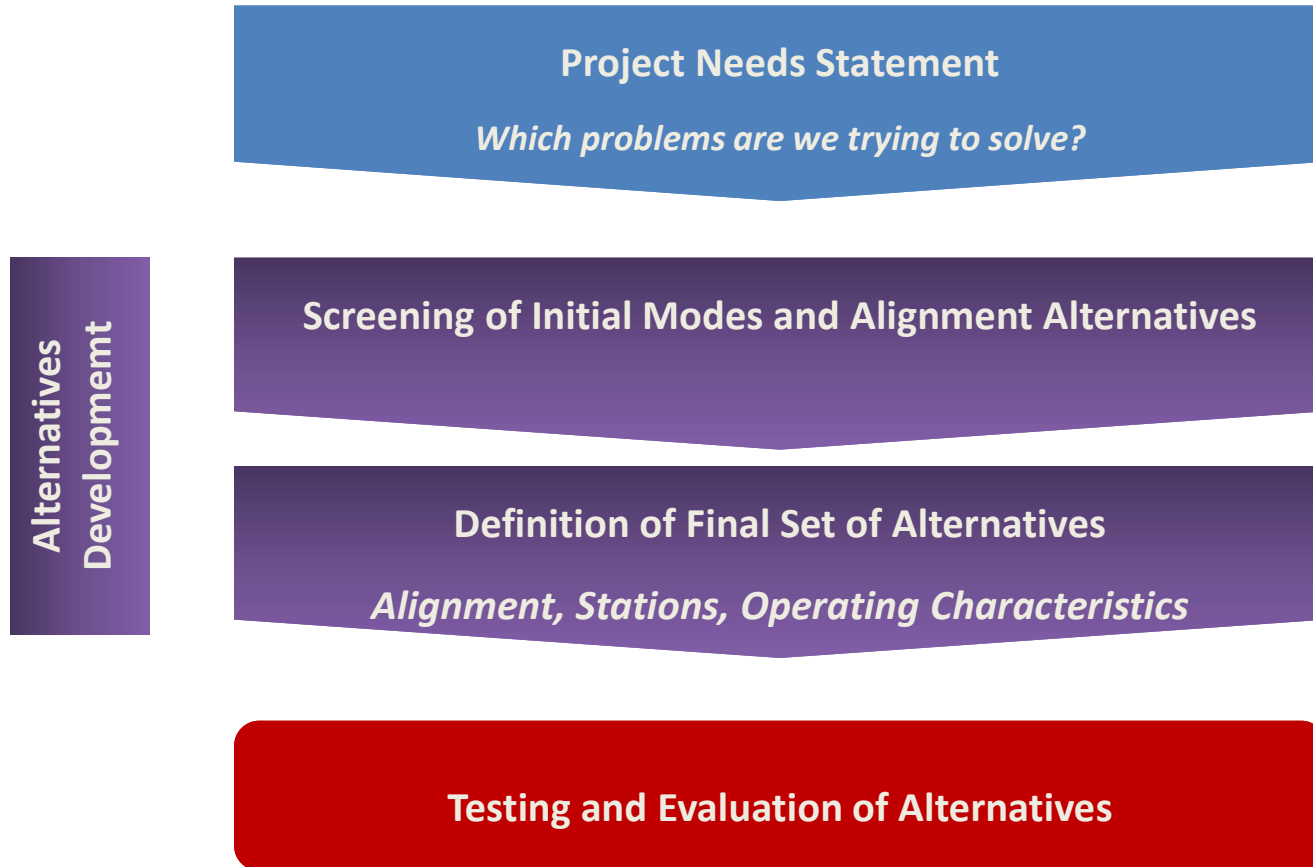
Previous Plans & Studies



Potential Multimodal Centers








Transit Alternatives Development

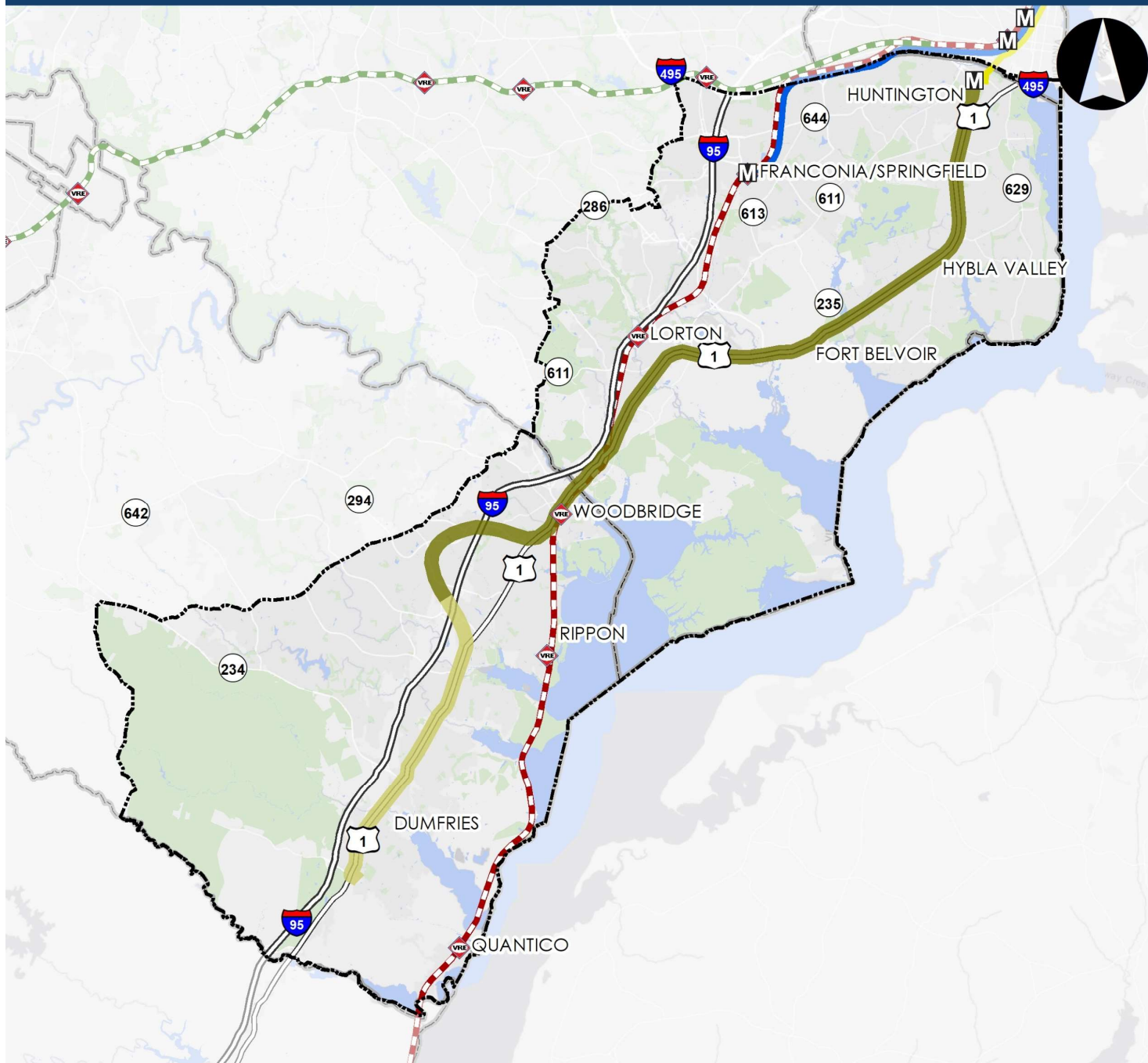


Transit Modes for Alternatives Testing

Based on input from last TAC meeting, considering:

	Metrorail – Blue Line Extension
	Metrorail – Yellow Line Extension
	Bus Rapid Transit
	VRE Service Improvements
	Express Bus Routes

POTENTIAL YELLOW LINE ALTERNATIVE



M Metrorail Stations

Virginia Railway Express (VRE) Stations

County Boundary

Metrorail Routes

Blue

Yellow

VRE Routes

Fredericksburg

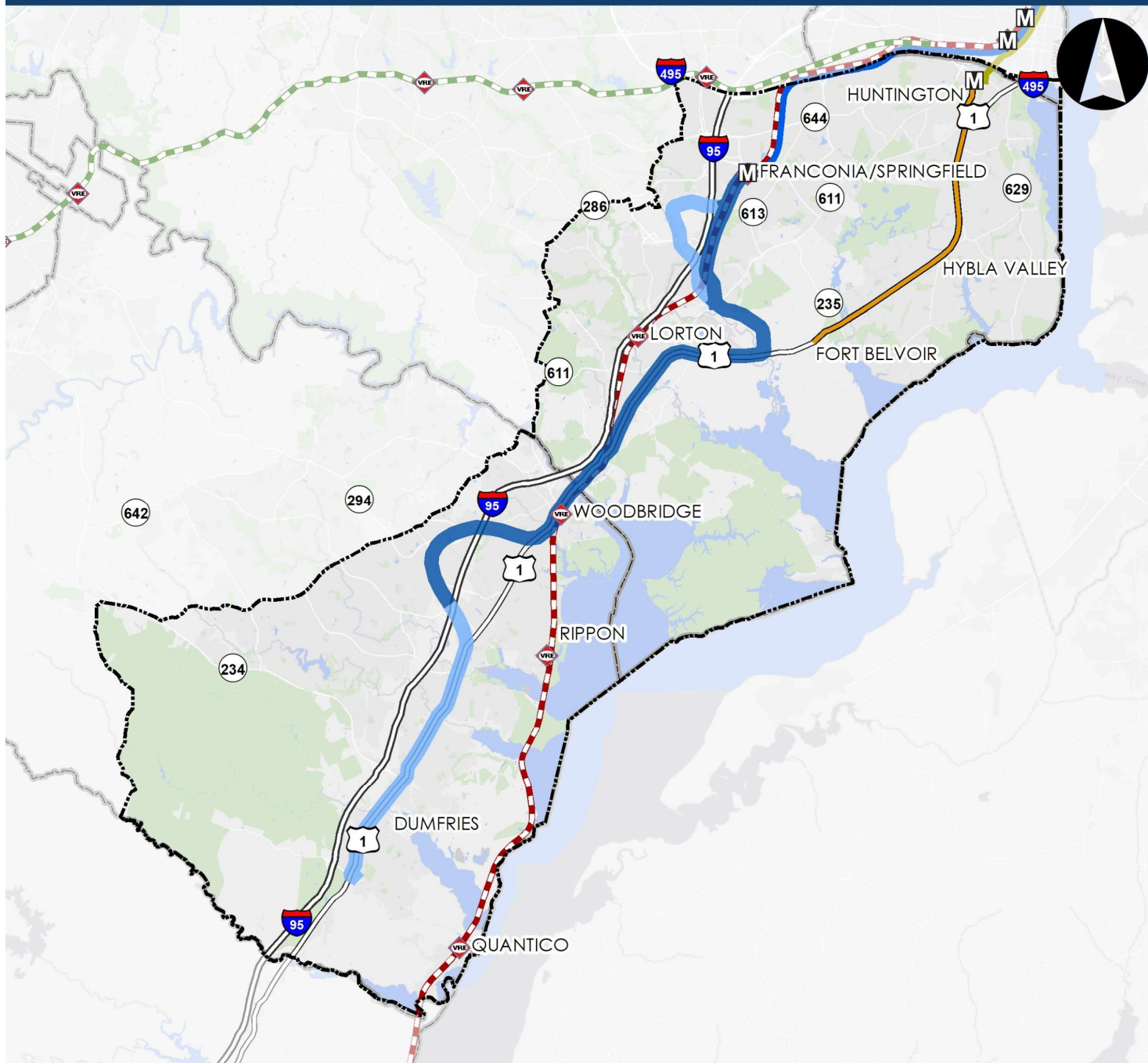
Manassas

Potential Alignment

Alternative Alignment

0 1 2 4 Miles

POTENTIAL BLUE LINE ALTERNATIVE



M Metrorail Stations

Virginia Railway Express (VRE) Stations

County Boundary

Richmond Highway BRT

Metrorail Routes

Blue

Yellow

VRE Routes

Fredericksburg

Manassas

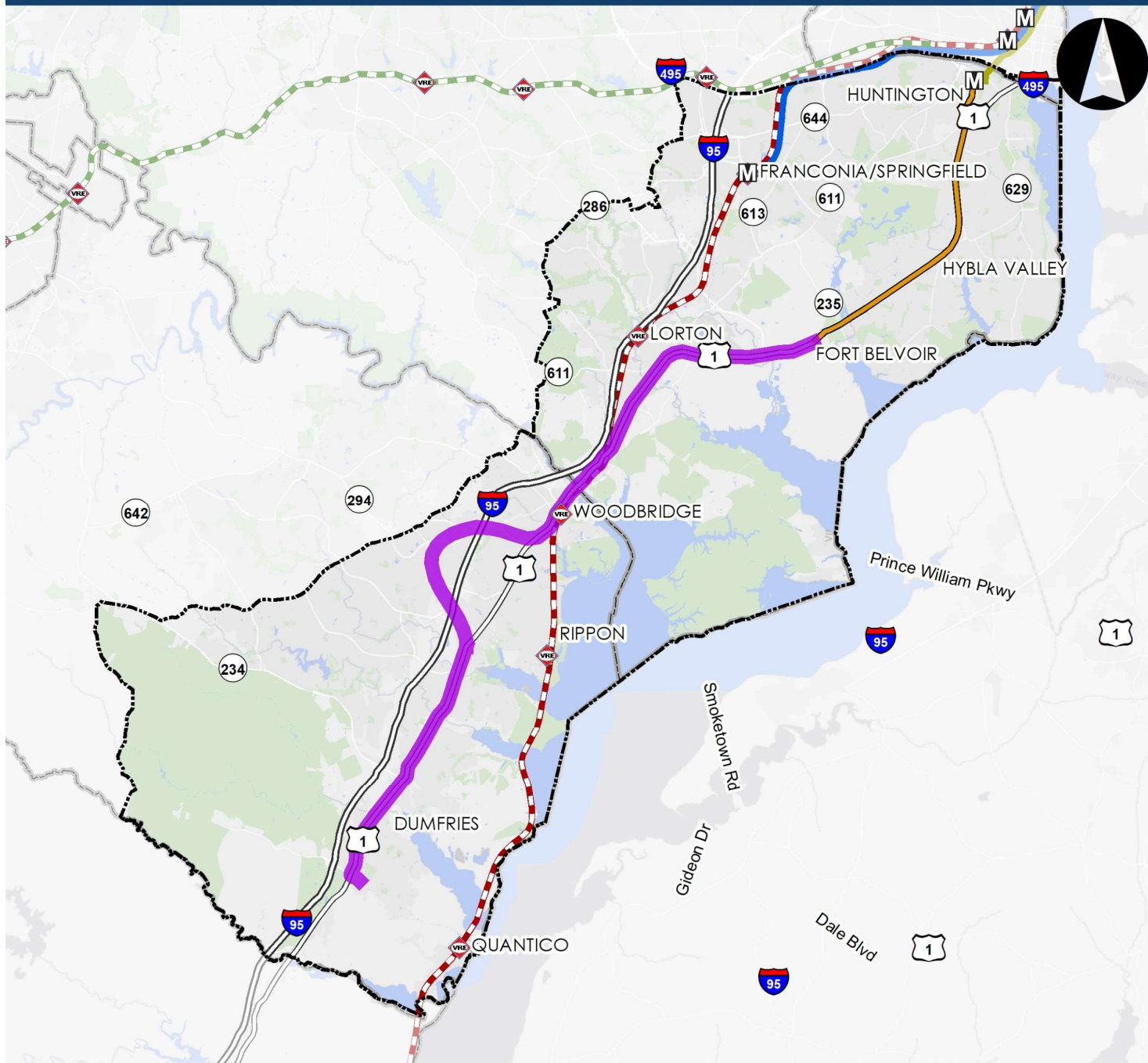
Blue Metrorail Alternatives

Potential Alignment

Alternative Alignments

0 1 2 4 Miles

POTENTIAL BRT ALTERNATIVE



M Metrorail Stations

Virginia Railway Express (VRE) Stations

County Boundary

Richmond Highway BRT

Metrorail Routes

Blue

Yellow

VRE Routes

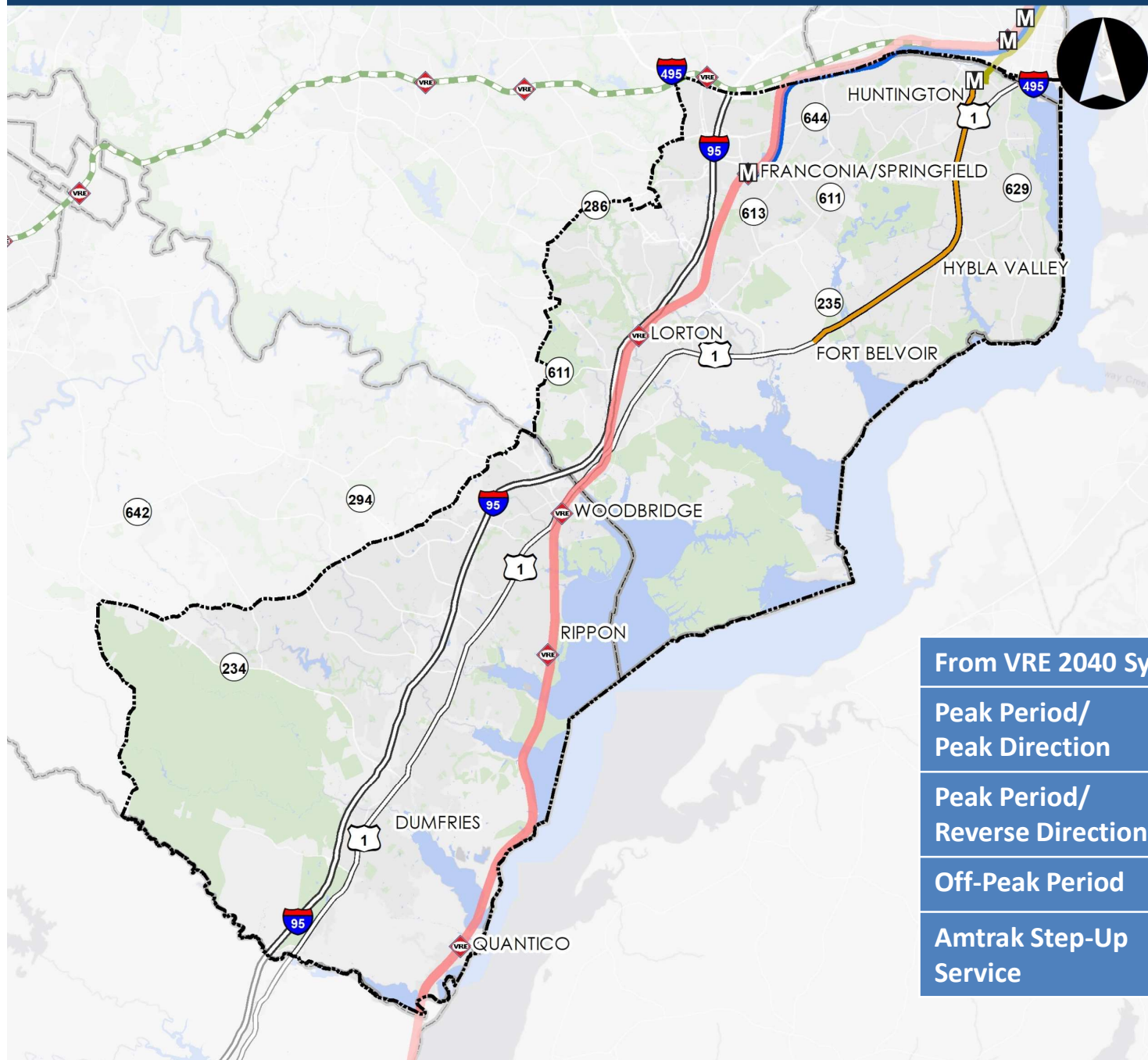
Fredericksburg

Manassas

Potential BRT Alignment

0 1 2 4 Miles

POTENTIAL VRE ALTERNATIVE



M Metrorail Stations

Virginia Railway Express (VRE) Stations

County Boundary

Richmond Highway BRT

Metrorail Routes

Blue

Yellow

VRE Routes

Manassas

Increased Frequency along Existing VRE Alignment

From VRE 2040 System Plan

Peak Period/ Peak Direction	15 mins
Peak Period/ Reverse Direction	30 mins
Off-Peak Period	60 mins
Amtrak Step-Up Service	60 mins peak period/ direction only

0 1 2 4 Miles

Express Bus Alternative

Create a Package of Express Bus Services - Enhancements to Current Express Services and Addition of New Routes

1. Future baseline includes current bus services as well as some improvements planned/funded but not in CLRP
2. Increase frequencies on existing express commuter Services focusing on high ridership routes and frequencies 60 min+
3. Possible new routes

Express Bus Alternative

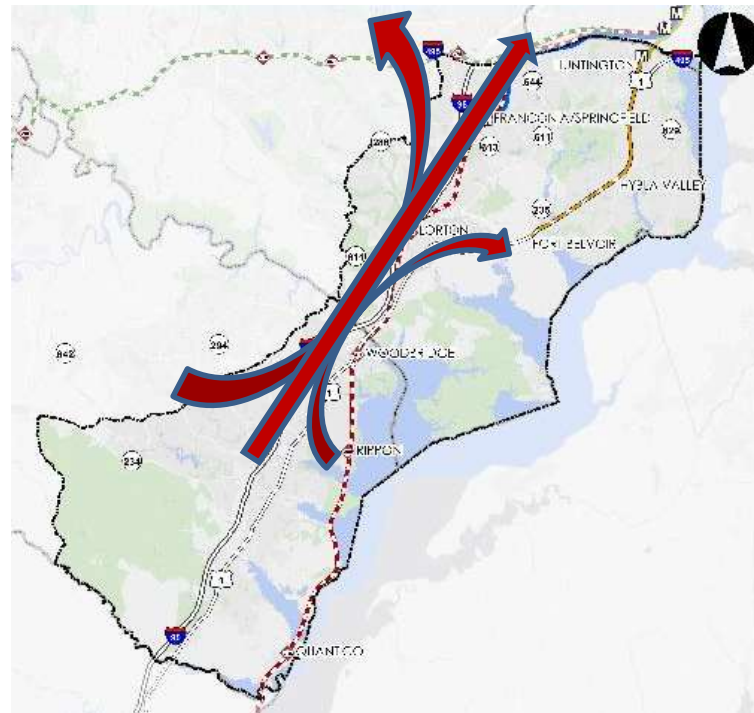
Possible new routes:

Origins

Lake Ridge
Dale City/Potomac Mills, Quantico
Woodbridge
Woodbridge
Woodbridge/Dale City/Quantico

Destinations

Old Town Alexandria via I-95
Tysons
Reston
Fairfax City
Ft. Belvoir South



Discussion & Meeting Wrap-Up

Schedule for Future TAC Meetings

TAC #	Month	Topics to Be Covered
7	May 2021	<ul style="list-style-type: none">• Testing of Transit Alternatives – Initial Results (Task 8)• Land Use - Existing Conditions at Station Areas (Task 13)
8	Jun. 2021	<ul style="list-style-type: none">• Testing of Alternatives – Refinements and Sensitivity Tests (Task 8)• Draft Costs & Legal Considerations (Tasks 9 and 10)• Land Use – Draft Scenarios (Task 13)
9	Jul. 2021	<ul style="list-style-type: none">• Summary of Transit Alternatives and Land Use Scenario Evaluation Results (Task 11)
10	Aug.2021	<ul style="list-style-type: none">• Draft Study Findings and Recommendations (Task 12)