



Virginia Department of Rail and Public Transportation

Bedford/Franklin Regional Passenger Rail Stop Study

Informational Open House

September 26, 2019

We Want Your Input



TOPICS

- Study scope
- Draft station concept
- Draft ridership methodology
- Traveler survey development



Bedford Passenger Station (ca. 1906)

Photo courtesy of <https://www.bedfordva.gov/1189/About-the-Town-of-Bedford>



Bedford Passenger Station (ca. 1917)

Photo courtesy of http://www.oldlibertystation.com/ols_history.asp



Bedford Station ca. 1975
By Hikki Nagasaki - TrainWeb: Bedford, Virginia, Public Domain,
<https://commons.wikimedia.org/w/index.php?curid=50150977>

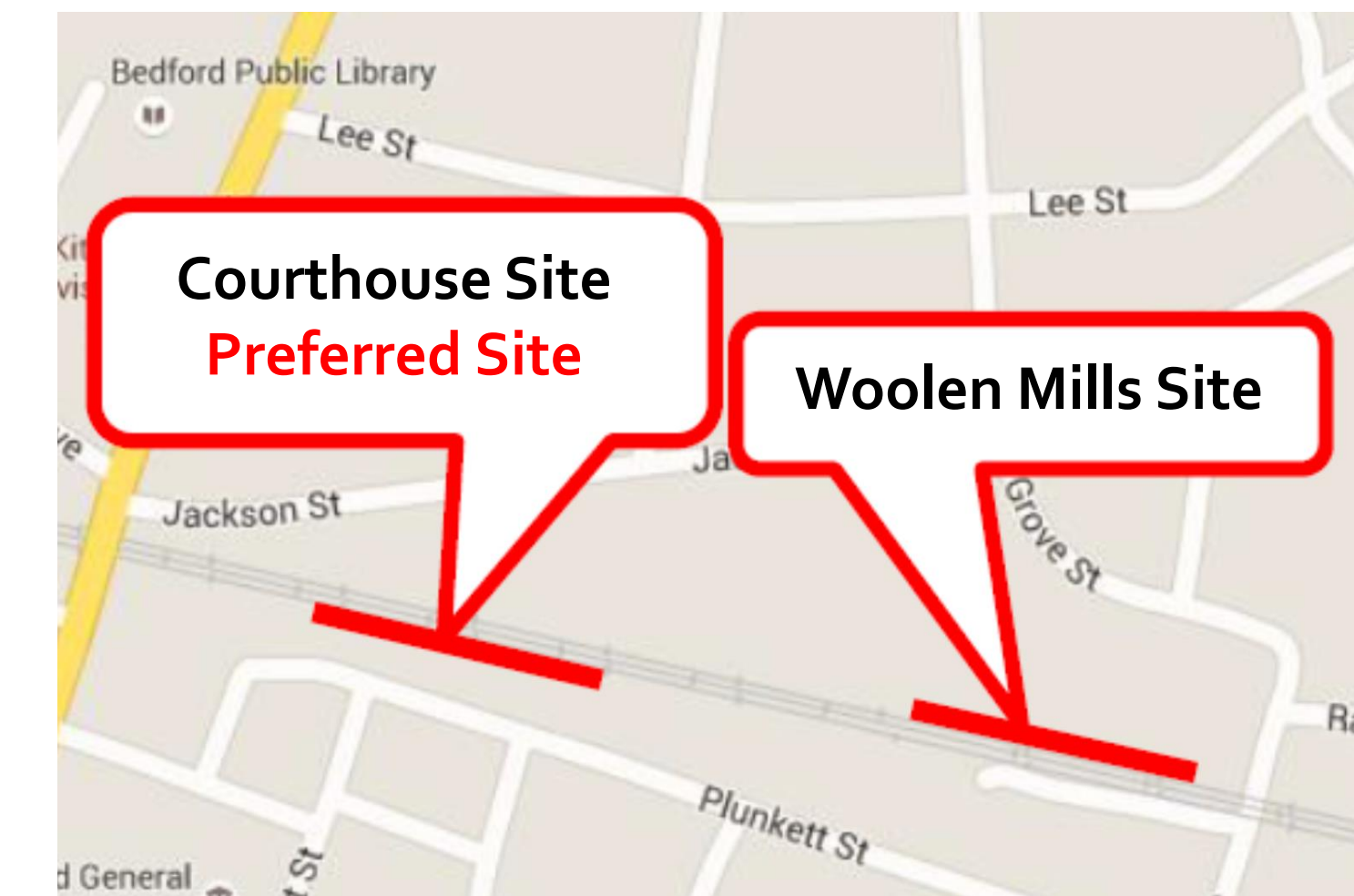
Study Scope



- Planning-level conceptual design
 - Develop potential station locations and layouts consistent with railroad and local design standards
- Planning-level opinion of probable construction costs
 - Develop probable capital costs of station alternatives
- Ridership analysis methodology
 - Develop revenue and ridership forecasts for the station concepts
- Traveler survey
 - Develop and conduct a traveler survey and report results
- Stakeholder and public meetings
 - Develop presentations and conduct five (5) BFRRI meetings and two (2) public meetings between August 2019 and March 2020
- Final report
 - Compile results of study activities to report methodologies, results and recommendations developed, including potential next steps

FOLLOW-UP PUBLIC MEETING – SPRING 2020

Previous Work



2014

Signed agreement

- Extend passenger rail service from Lynchburg to Roanoke
- Between Commonwealth of Virginia, Amtrak, Norfolk Southern Railway and City of Roanoke

Formation of Bedford/Franklin Regional Rail Initiative (BFRRI)

2016

Town of Bedford Passenger Rail Station Feasibility Study and Conceptual Plan

- Prepared by Wendel in March 2016
- Prepared for the Town of Bedford, VA

Intercity Passenger Rail Service Study

- Prepared by WSP/Parsons Brinkerhoff in December 2016
- Prepared for DRPT

2019

Intercity Passenger Rail Operating & Capital (IPROC) Grant Application

- Prepared by the Town of Bedford, VA
- Submitted to DRPT

Station Programming Guidelines



Amtrak Category 3 – Caretaker

- Serves low-density areas (suburban/rural)
- Projected Annual Ridership between 20,000-100,000



La Plata, MO Amtrak Station
Example of Caretaker Station
Photographer Jim Taylor



Holyoke, MA Amtrak Station
Example of Shelter Station
Photo courtesy of: <http://www.greatamericanstations.com/wp-content/uploads/2016/10/Holyoke-2018.jpg>

Amtrak Category 4 – Shelter

- Serves low-density areas (suburban/rural)
- Projected Annual Ridership less than 20,000

Station Programming Amenities

• **DRPT** •

Amtrak Category 3 – Caretaker

- Platform with canopy
- Building
- Auto & taxi pick-up & drop-off lanes
- Parking
- Rental cars on call
- Bicycle racks
- Station and regulatory signage
- Site lighting
- Trash pick-up and snow removal
- All customer service features based on site evaluation
- Vending machines
- Host/Greeter staff



Lawrence, KS
Example of Caretaker Station
Photo courtesy of: <https://www.greatamericanstations.com/wp-content/uploads/2016/10/lawrenceKS.jpg>

Amtrak Category 4 – Shelter

- Platform with canopy
- Sheltered waiting area
- Auto & taxi pick-up & drop-off lanes
- Parking
- Station and regulatory signage
- Trash pick-up and snow removal
- All customer service features based on site evaluation
- Emergency platform call box
- No staff at shelter



Burke Center, VA
Example of Shelter Station
Photo courtesy of: <https://www.burkecentreweb.com/picture/VRE2009-incoming-train.gif>

Platform Programming



Side Platform Elements

- Length – 1000 feet preferred for Northeast Regional trains
- Width – 15 feet preferred for capacity & baggage service
- Height – high-level for ADA accessibility
- Slope – away from tracks for safety
- Weather protection - canopy, wind breaks or shelter
- Signage and Passenger Information Displays (PIDS)
- Seating
- Entrance/exit capacity
- Travel distance to exit
- Recycling and trash receptacles



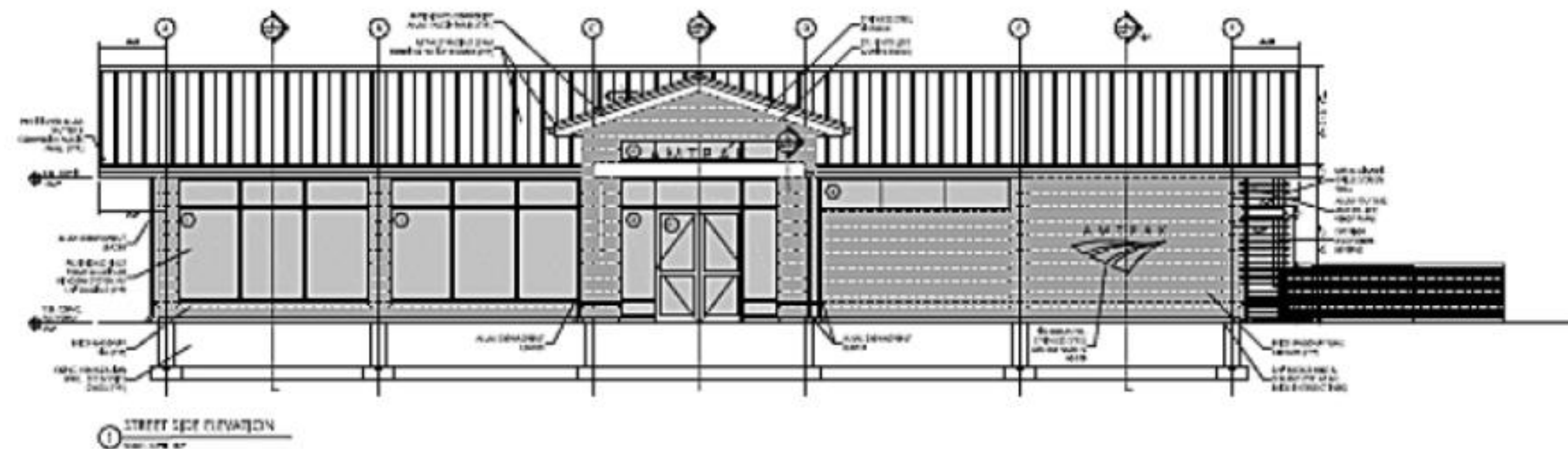
Dover, NH

Example of High-level Platform

Photo courtesy of:

<https://www.greatamericanstations.com/wp-content/uploads/2016/09/Dover-NH-Dec-2016.jpg>

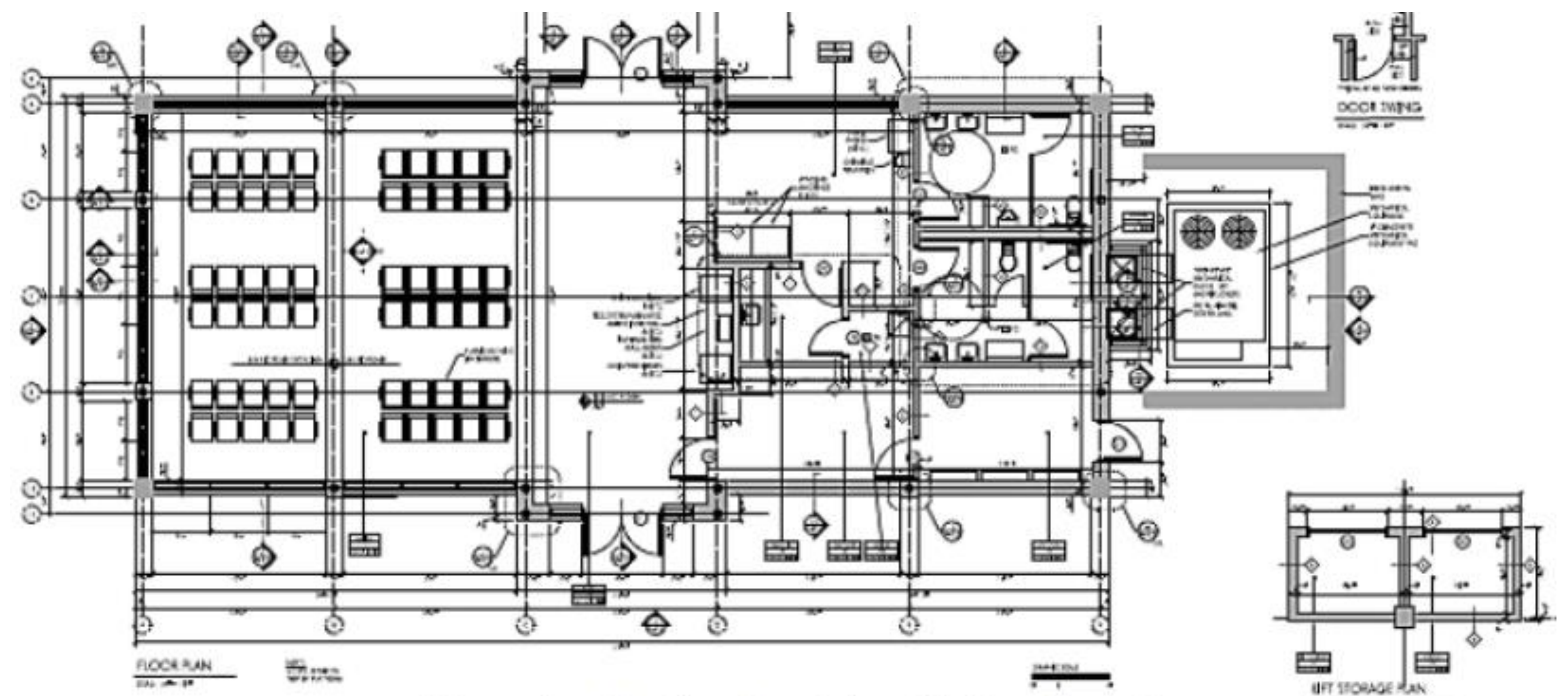
Site Programming – Prototype Station



Street Side Elevation of the Caretaker Station prototype

- Proximity to at-grade crossings
- Parking
- Community spaces
- Utilities and mechanical systems

- Site access and circulation
 - Pedestrians
 - Cyclists & non-motorized transportation
 - Vehicles
 - Railroad
- Location along tracks
- Existing train operations



Floor plan for the Caretaker Station Prototype

Amtrak Station Program Planning Guidelines

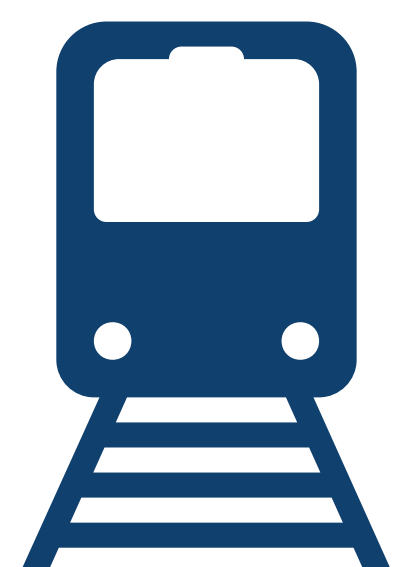
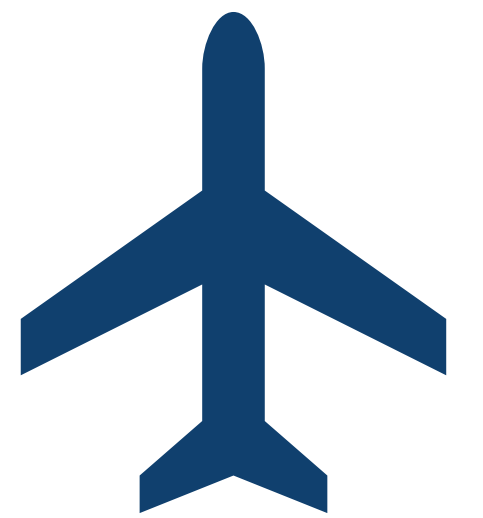
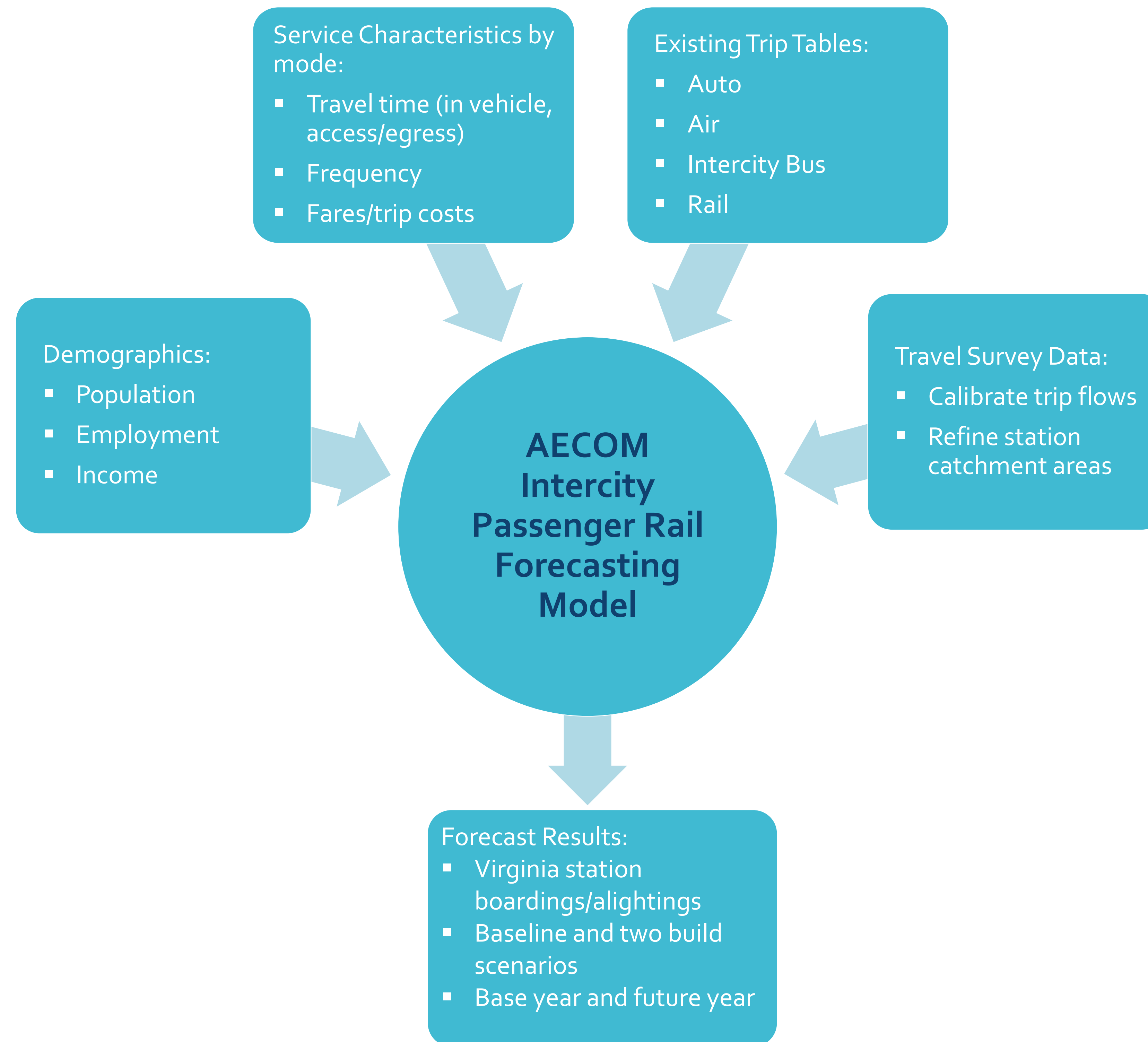
Caretaker Station Prototype

Images from: http://nrvrc.org/nrvpassengerrailstudy/resources/research/national/Amtrak_Station_Program_Planning_Guidelines.pdf

Ridership Forecasting



Forecasting Methodology



Traveler Survey Development

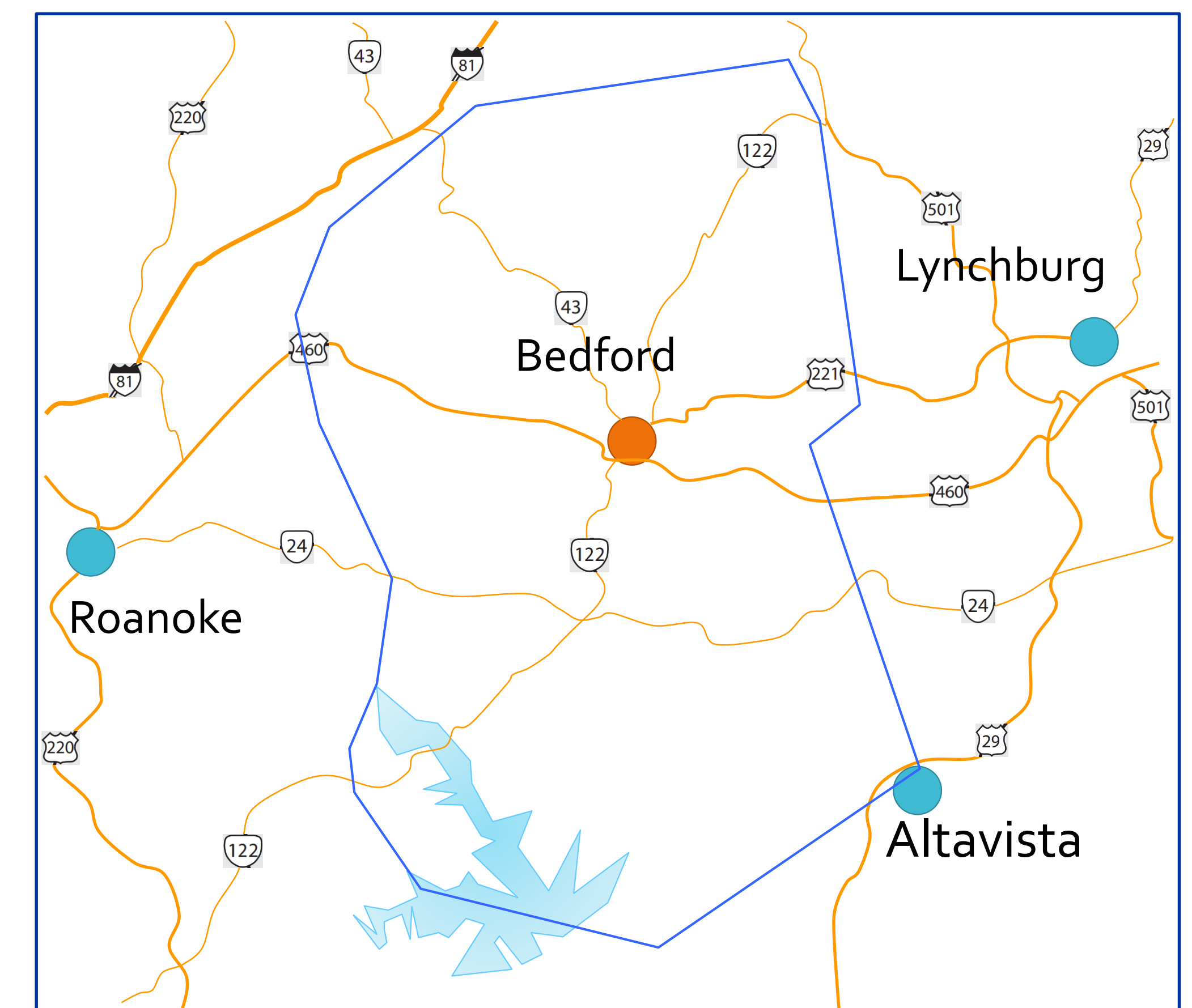


The traveler survey will be an anonymous on-line survey aimed at both residents and visitors to Bedford, which will allow the project team to accurately capture the ridership catchment areas for the region's stations, as well as calibrate travel flows.

Information to be collected:

- Origin and destination
- Trip purpose
- Primary mode/access and egress mode
- Fare/trip cost
- Propensity to take rail

Sample Bedford Catchment Area



Traveler Survey Development



The project team will work with DRPT and other Stakeholders to distribute the link to the on-line survey in locations such as:

- Rail stations (Roanoke/Lynchburg)
- Local businesses
- Highway rest areas

Currently developing sampling plan to ensure a statistically significant sample across the following elements:

- Visitor vs. Residents
- Current travel mode

Anticipated Data Collection:
October 15-November 15, 2019

Sample Rail Rider Survey Questions

1. What city or town are you traveling from (city and state)?
2. Which one of the following best describes the main form of transportation you used to get here?
 1. Train
 2. Bus
 3. Personal vehicle
 4. Taxi, Uber, or Lyft
 5. Rental vehicle
 6. Other_____
3. What is your primary purpose for visiting?
 1. Commuting to/from regular work location
 2. Other business travel
 3. Traveling to/from school
 4. Social, recreation, or leisure
 5. Personal business (errands, healthcare appointment)
 6. Other_____

We would like to ask about how you might travel in the future, if rail service is introduced. For your reference, the table below shows example characteristics of a one-way trip.

	Auto	Bus	Air	Rail
Travel Time	6 hours	11 hours	3.5 hours	9.25 hours
Travel Cost	\$55 (fuel only)	\$85	\$275	\$100
Requires Transfer	No	Yes	Yes	No

4. On a scale of 1 to 10, if rail service is introduced connecting up to the Northeast Corridor, how likely are you to take the train instead of your current transportation mode? (circle one option)

1-not at all 2 3 4 5-possibly 6 7 8 9 10-very likely