



Virginia Department of Rail and Public Transportation

VIRGINIA
STATEWIDE RAIL PLAN

Rail Plan Workshop

February 2017 CTB Rail Committee

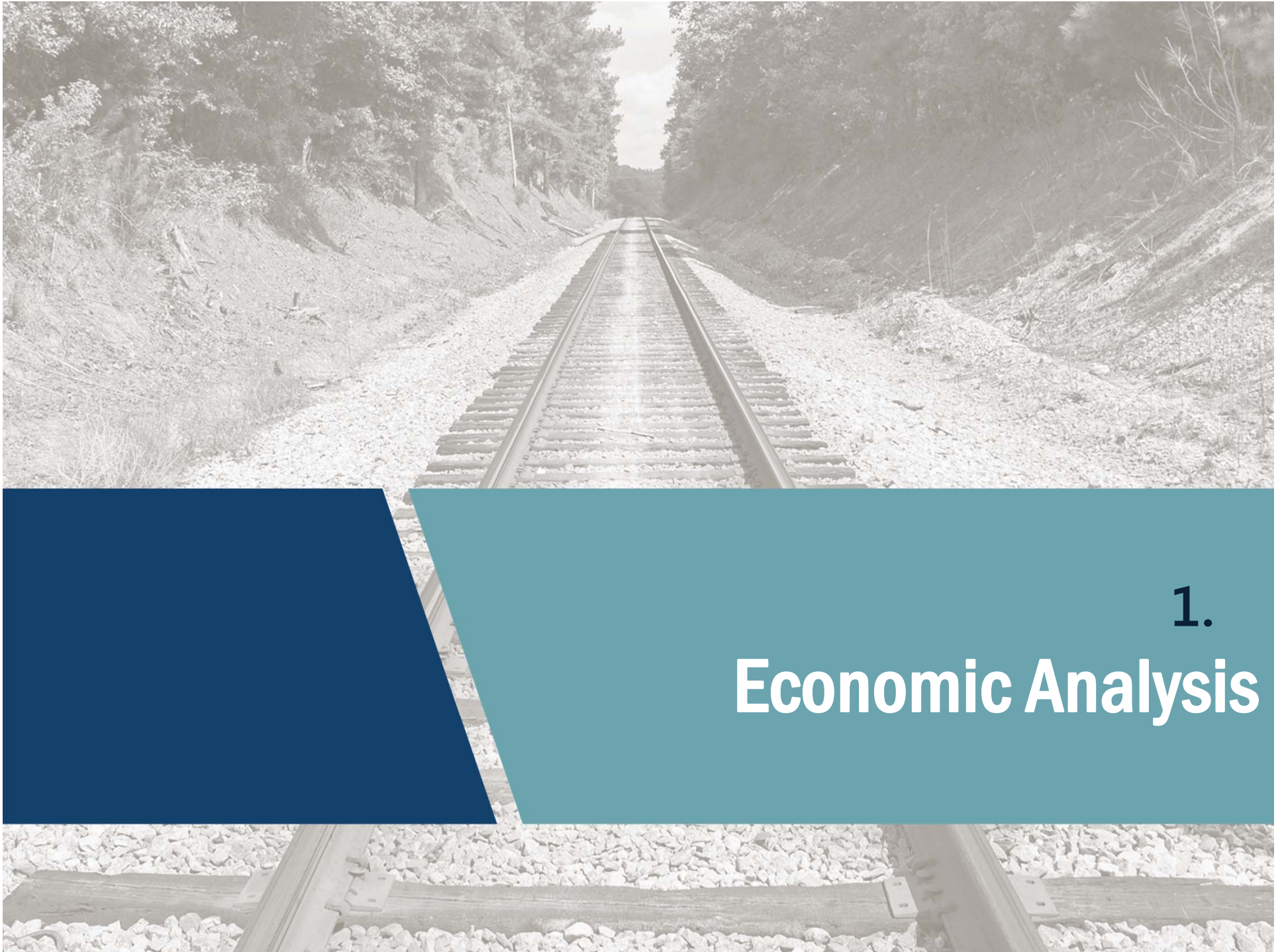
Status Update

- 1. Economic Analysis
- 2. Outreach Efforts
- 3. Plan Development

Agenda

Discuss and summarize recent efforts and provide a status update for the rail plan.





1.

Economic Analysis

Economic Analysis

Statewide Analysis

Total Costs of Rail
(Operating, Wages,
Capital, etc.)

Total Benefits of Rail
(Jobs, Pavement,
Safety, Enviro., etc.)

Total Economic Impact
(VMT avoided,
Pavement, Safety,
Congestion, etc.)

Regional Analysis

Existing Conduive Rail
Industry Types

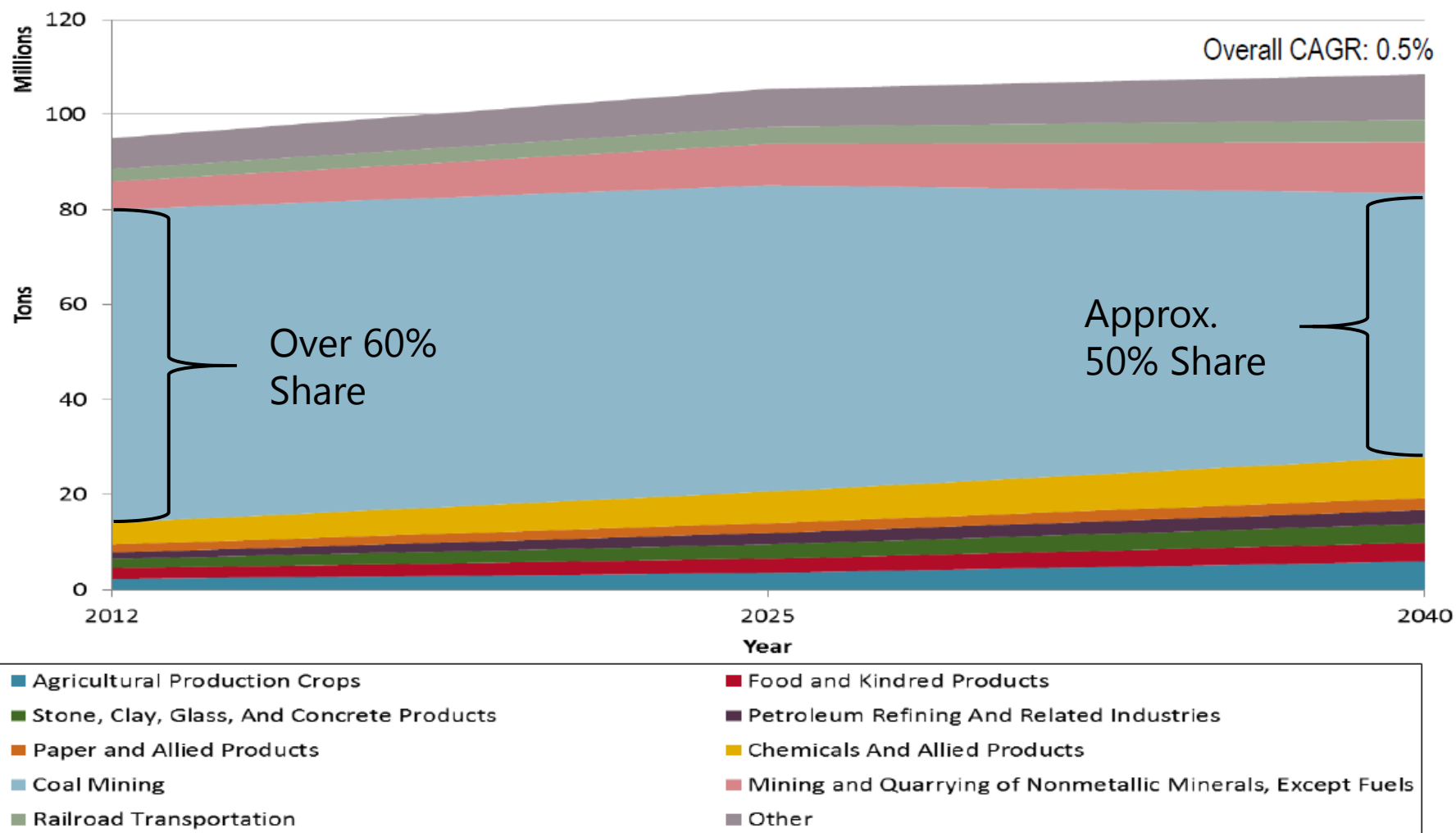
Location of Existing
Businesses

Current Mode Split

Project Types to
Increase Mode Split



Economic Analysis



Economic Analysis

US ADVISORY SERVICES

Update of the Freight Rail Bottom Line Report:
Continuing Study of Freight Rail Supply Meeting
Demand

Briefing for AASHTO

Alexander King
WSP | Parsons Brinckerhoff

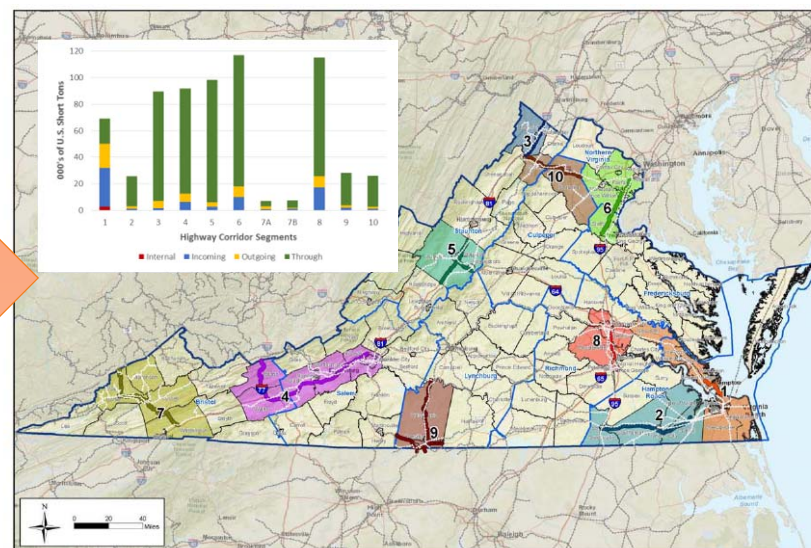
Washington, DC
February 21, 2016



www.pbworld.com

OLIVER WYMAN

WSP | PARSONS BRINCKERHOFF



1 Hampton Roads I-64 (East-West Corridor)
2 Route 58 @ US450 (Southside Corridor)
3 I-81 Winchester to Strasburg (Crescent Corridor)
4 I-81 Roanoke and Blacksburg (Crescent Corridor)
5 I-81 Connecting to I-64 through Staunton (Crescent Corridor)
6 I-495 between I-495 and Fredericksburg City (Washington to North Carolina Corridor)
7 All Route 58 to Route 23, I-81 at Arlington to Potomac (Southside Corridor)
8 I-495 Richmond to Potomac (Washington to North Carolina Corridor)
9 Route 58 and Route 29, South of Danville (Seminole Corridor)
10 I-495 Strasburg to Gainesville (Northern Virginia Corridor)

Location of Freight Economic Linkage Analysis, Counties and Transportation Facilities

Virans

Research other national and state initiatives to inform the economic analysis and the Virginia State Rail Plan



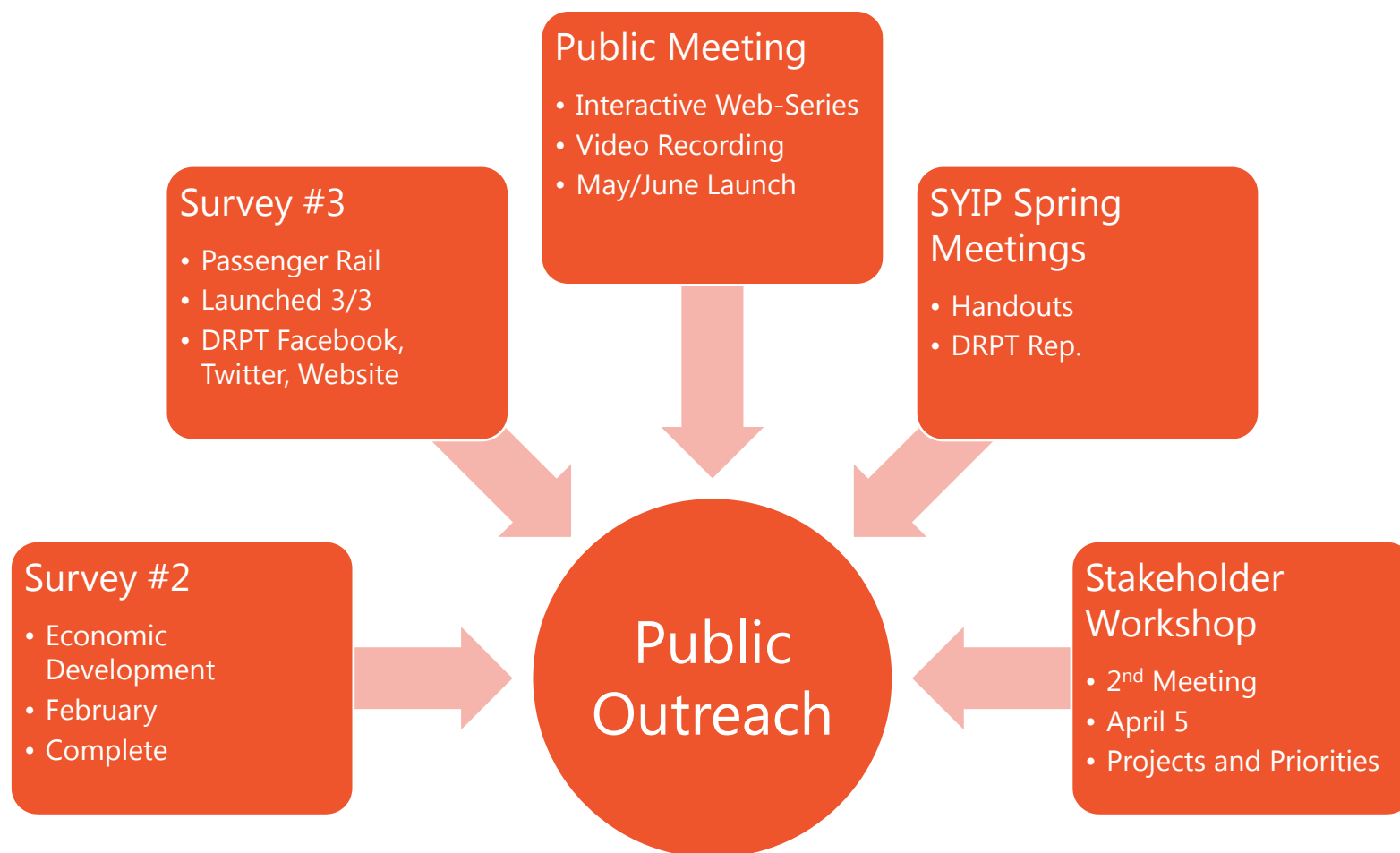


2.

Outreach Efforts

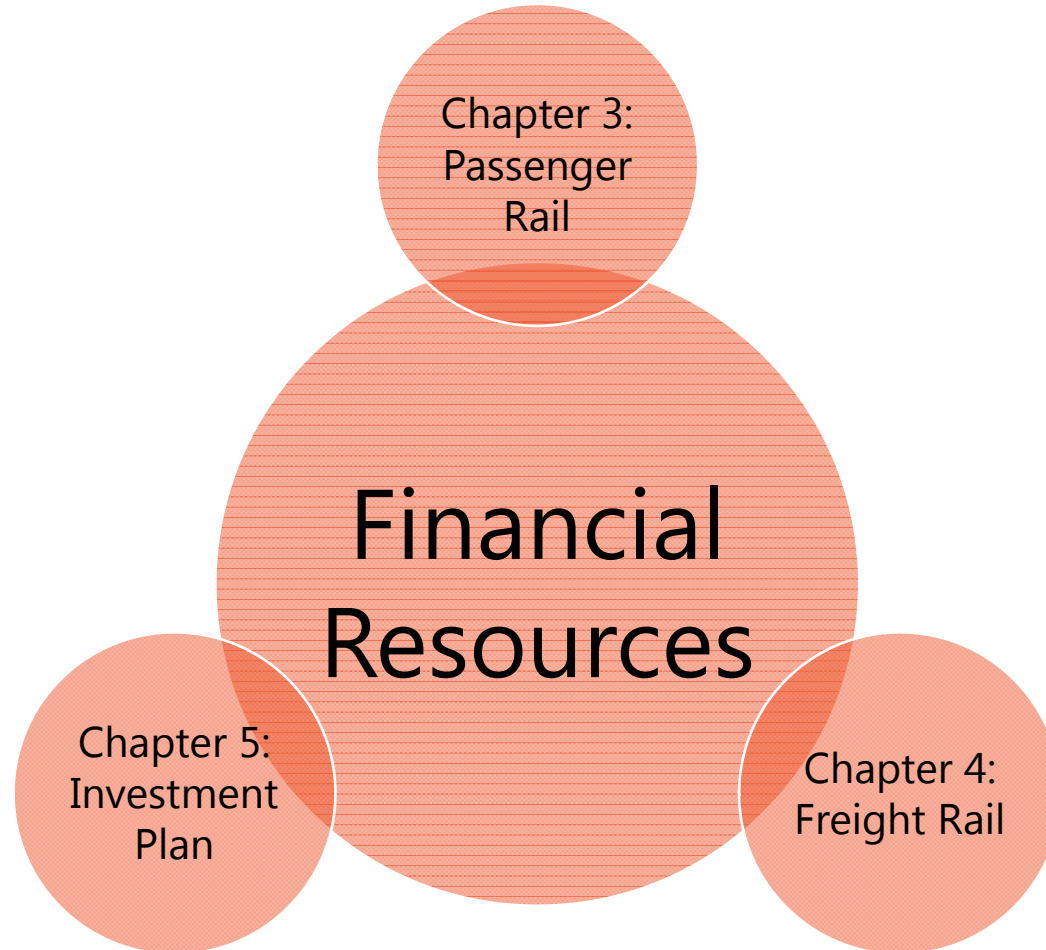


Outreach Efforts





3. Plan Development





Thank You
Questions?

