



Virginia Department of Rail and Public Transportation

**VIRGINIA**  
STATEWIDE RAIL PLAN

# Rail Plan Workshop

January 2017 CTB Rail Committee

1. Schedule/Purpose

2. Current Status

3. Workshop

4. Outreach Results  
(Optional)

## Agenda

*Discuss the current status of the rail plan, establish a common direction for the future, and conduct a workshop to gather your input.*



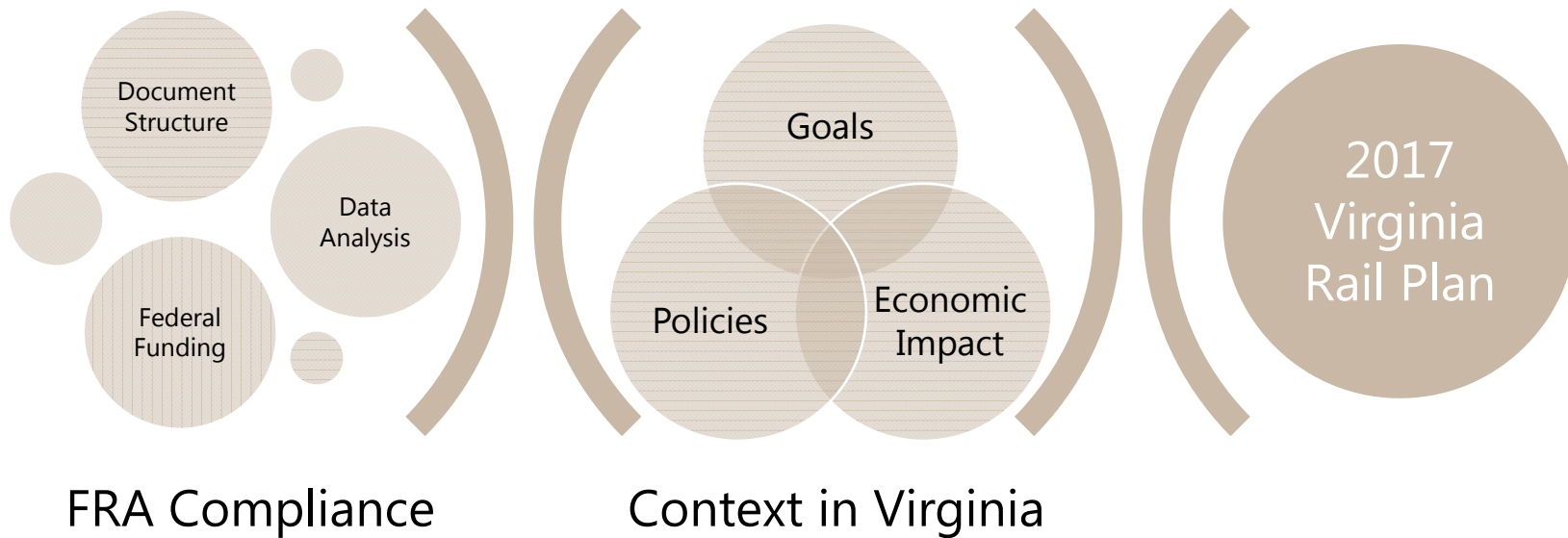


**1.**

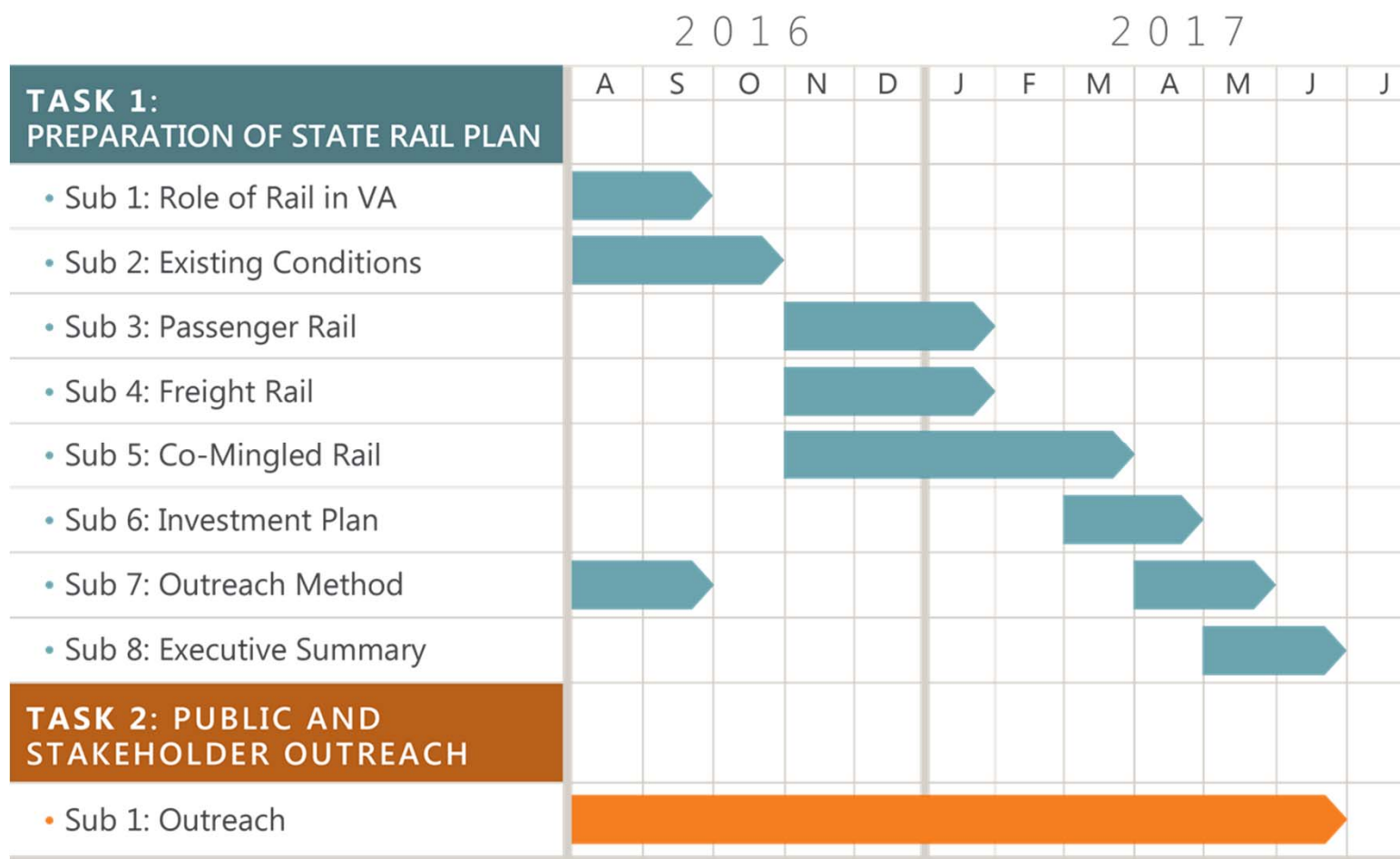
# **Review Schedule/Purpose**



# Review Schedule/Purpose



# Review Schedule/Purpose



Presented to CTB Rail in September 2016



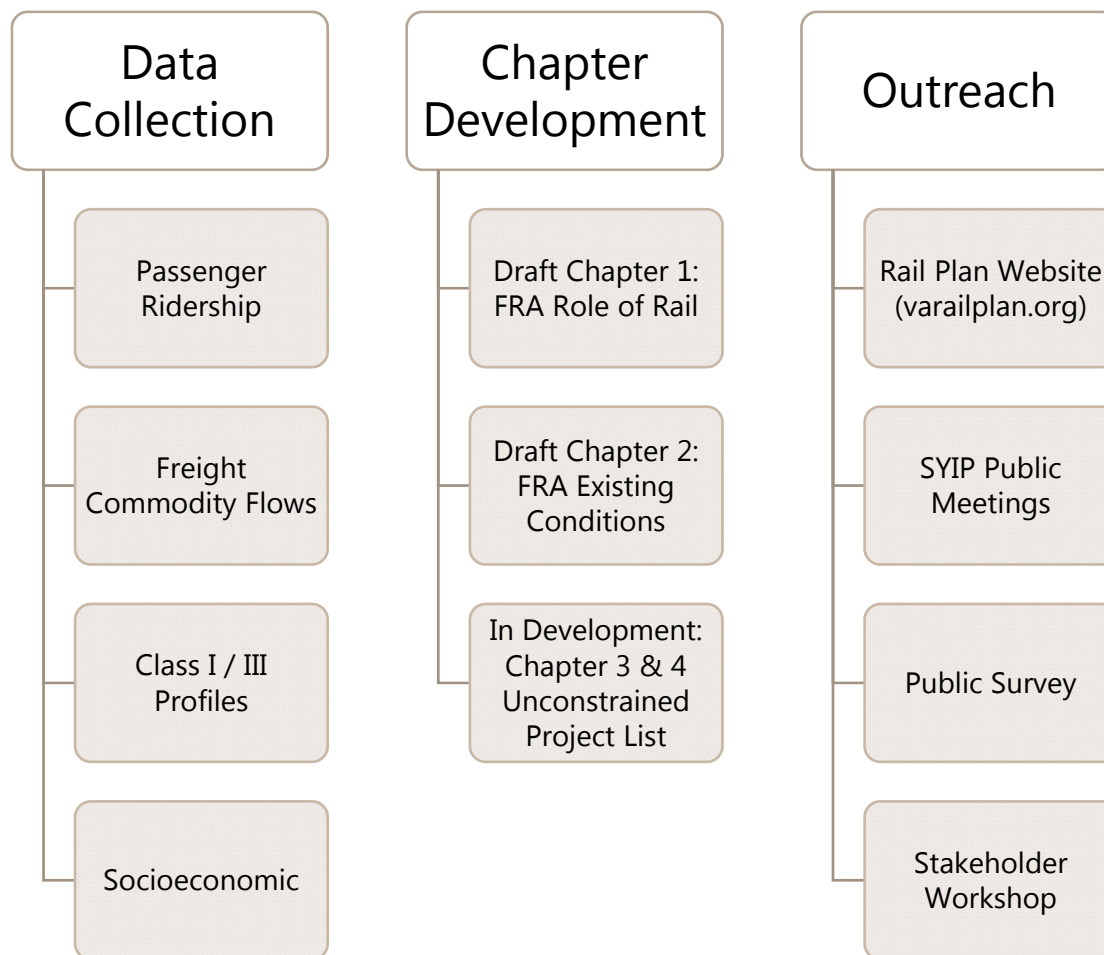


2.

## Current Status



# Current Status



## Economic Impact Analysis

- Regional Base Economic Analysis
- Defining Regional Industries Conducive to Rail
- Defining Investments to Serve Businesses
- Projecting Economic Impact

## Continued Outreach

- One-on-One Interviews
- Public Meeting
- Additional Public Surveys
- Additional Stakeholder Workshop

## Executive Summary

- Primary Source of Information
- Marketing Document
- Context in Virginia



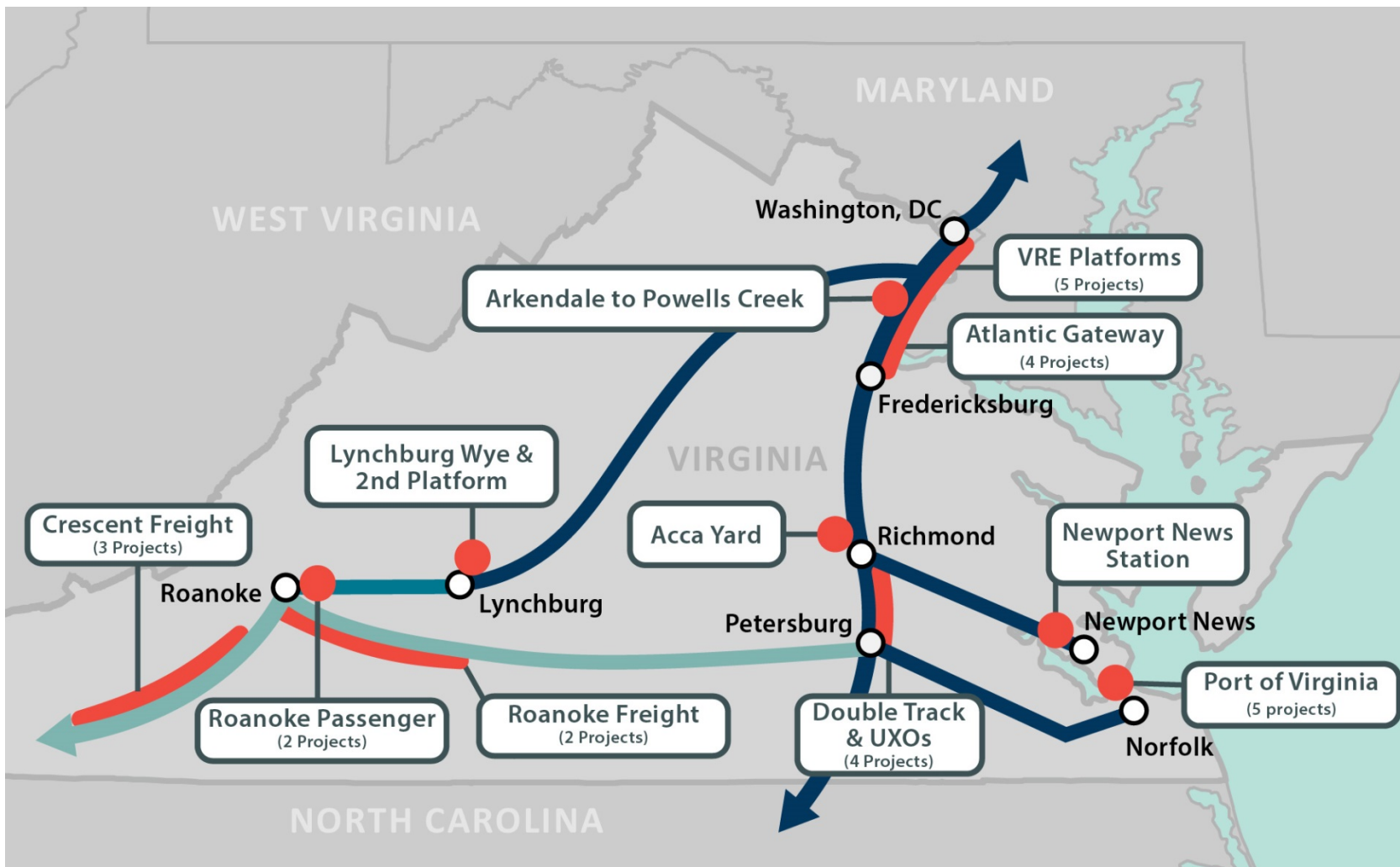




3.

# Workshop





## Defining VA Goals

- Existing vs New Service
- Speed vs Reliability
- Operation vs Capacity
- Rail vs Other Modes

## Defining VA Policies

- Station Development
- Modal Connectivity
- Inter-State Cooperation
- Public Ownership
- Return on Investment

## Defining VA Investment Priorities

- Freight vs Passenger
- Incremental vs Corridor Development







**Thank You**





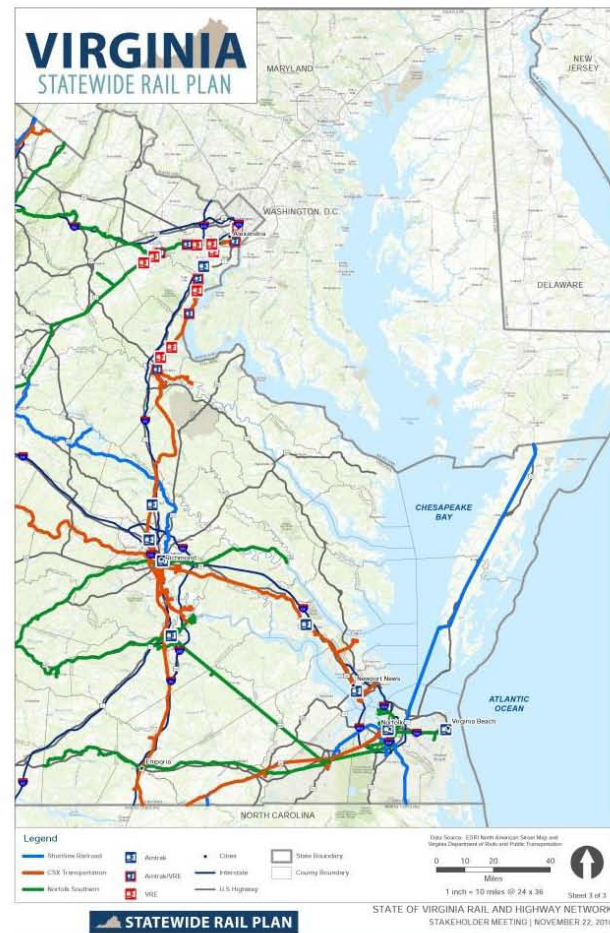
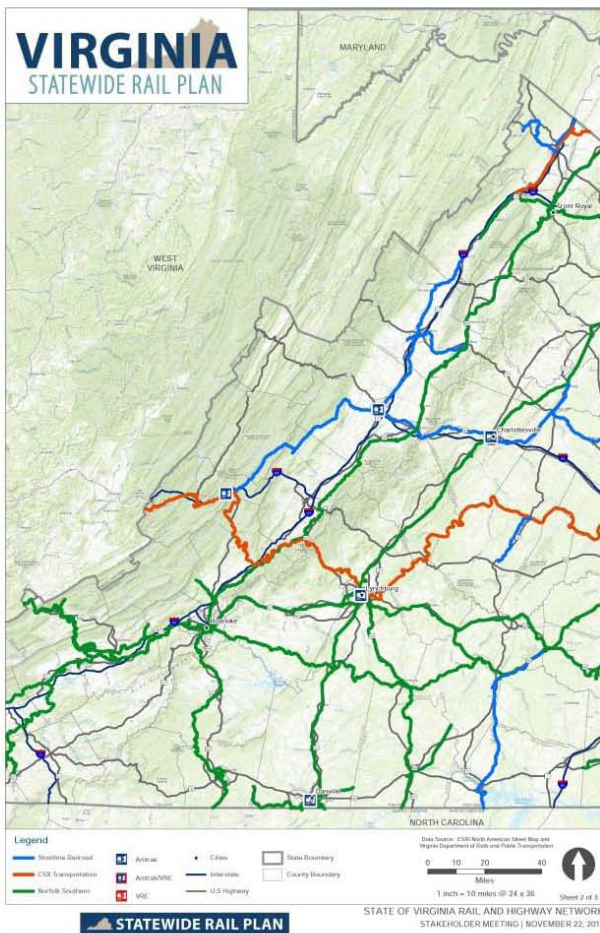
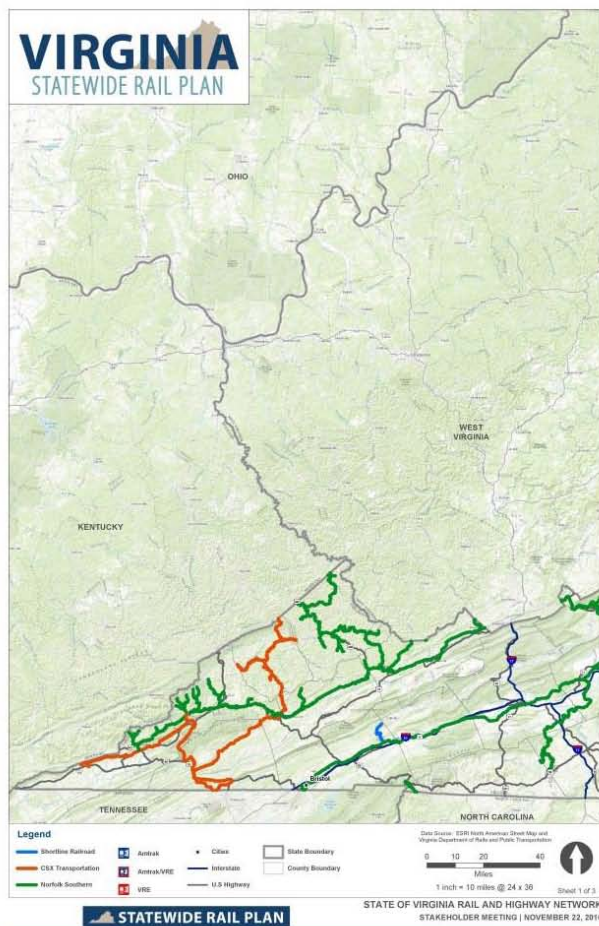


## 4. Outreach Results (Optional)





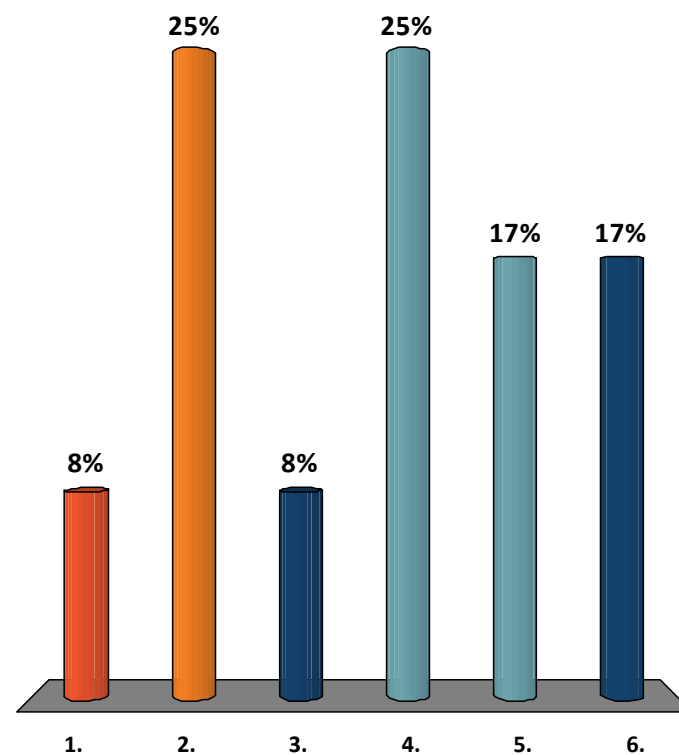
# Outreach Results



## Stakeholder Responses

**What investments could be made in Virginia to improve freight rail access?**

1. New or enhanced transload facilities
2. New or enhanced intermodal facilities
3. New or enhanced industrial track access
4. New or enhanced multimodal connections
5. New or enhanced federal, state, local, and public-private partnership funding options
6. Other options

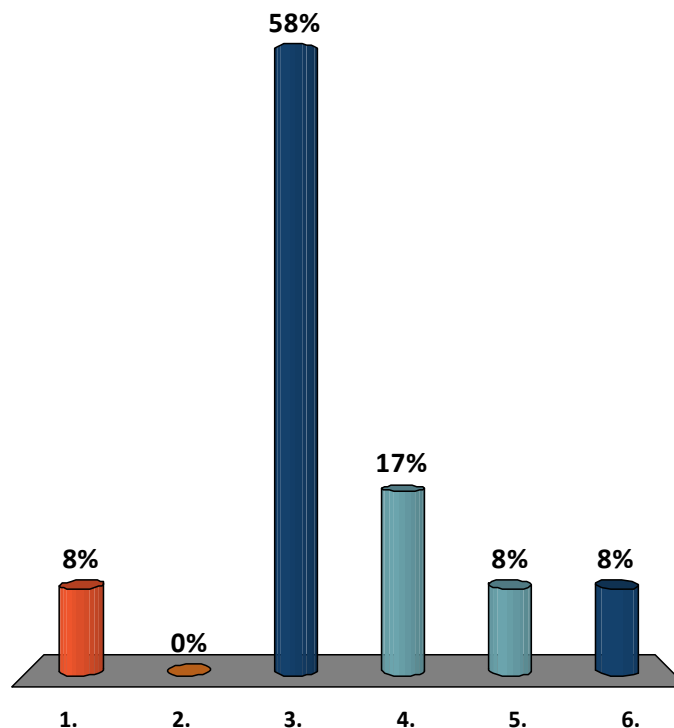


# Outreach Results

## Stakeholder Responses

**What investments could be made to enhance the efficiency, velocity, capacity, and safety on the Virginia state rail network?**

1. Grade crossing improvements (upgrades to grade crossing signals and surfaces, grade separation, etc.)
2. New or enhanced rail yards and terminals
3. Infrastructure investment (extend or construct new sidings and multiple main tracks, track and bridge upgrades to accommodate 286K cars, wayside signal system upgrades)
4. Investments targeting state of good repair
5. Advanced technology and innovation
6. Other options



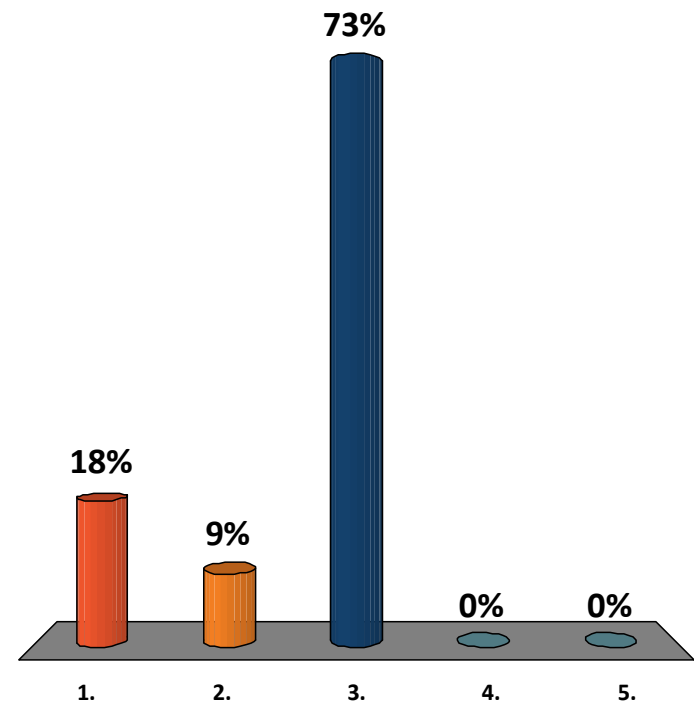


# Outreach Results

## Stakeholder Responses

**What are the bottlenecks and chokepoints on the Virginia state rail network?**

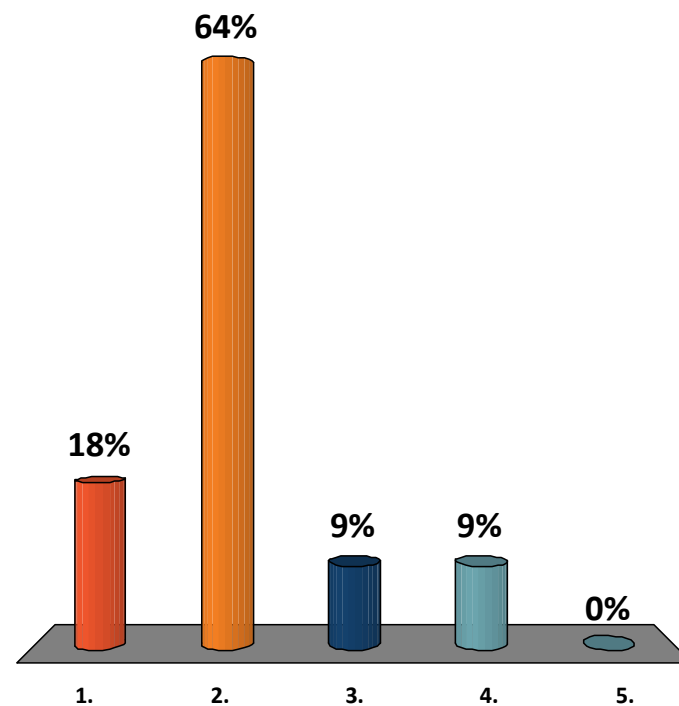
1. Congestion in urban terminal areas
2. Constrained capacity on principle freight rail corridors
3. Constrained capacity on shared-use passenger and freight rail corridors
4. Constrained vertical clearances and railcar weight restrictions
5. Other



## Stakeholder Responses

**What are the most important aspects of a passenger rail service to you?**

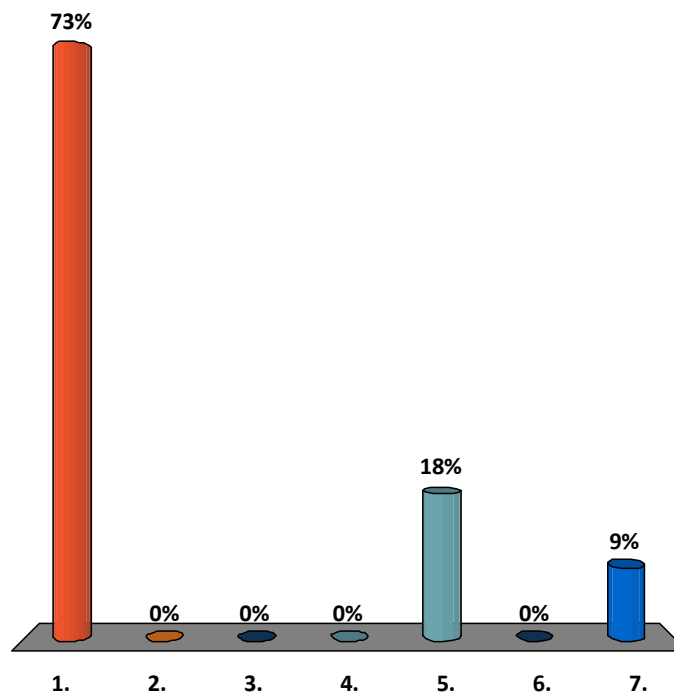
1. Travel speed/time
2. Travel reliability
3. Amenities and comfort (including technology)
4. Frequency of service
5. Other



## Stakeholder Responses

**How should Virginia prioritize future passenger rail service decisions?**

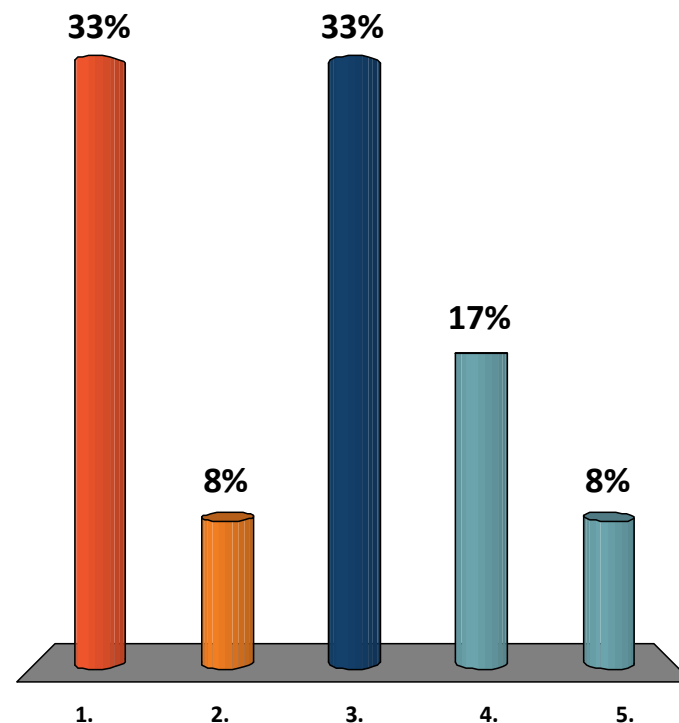
1. More frequencies on existing routes
2. Same frequencies but improved amenities/performance
3. More stations on existing routes
4. New routes, even if frequencies on existing routes must be reduced
5. New routes, with frequencies on existing routes maintained
6. Same frequencies but improved station services
7. More transit connections



## Stakeholder Responses

**How should Virginia prioritize future freight rail service decisions?**

1. Increased speed/reliability to existing distributors
2. Increased access to new distributors
3. Alleviate network bottlenecks
4. Expanded incentive programs
5. Construction of new routes to accommodate economic growth





## Goals

- Last Mile Connections
- Increased Frequency on Existing Lines
- Improved Reliability on Existing Lines
- Policies that Promote Operational Efficiency
- Increased Funding Programs
- Alleviate Chokepoints
- Develop Third-Party Policy Guidance



# Outreach Results



## Public Survey

- Less than 1 min.
- Promote Plan
- 50+ Respondents
- 87% Urban Crescent
- 1,000 people "reached"



# Outreach Results



## Public Survey

- Less than 1 min.
- Promote Plan
- 50+ Respondents
- 87% Urban Crescent
- 1,000 people "reached"

Would you support expanded public programs to support rail services?





**Thank You**  
*Questions?*

