



# Route 1 Multimodal Alternatives Analysis: Executive Steering Committee Meeting

July 11, 2013



# Agenda

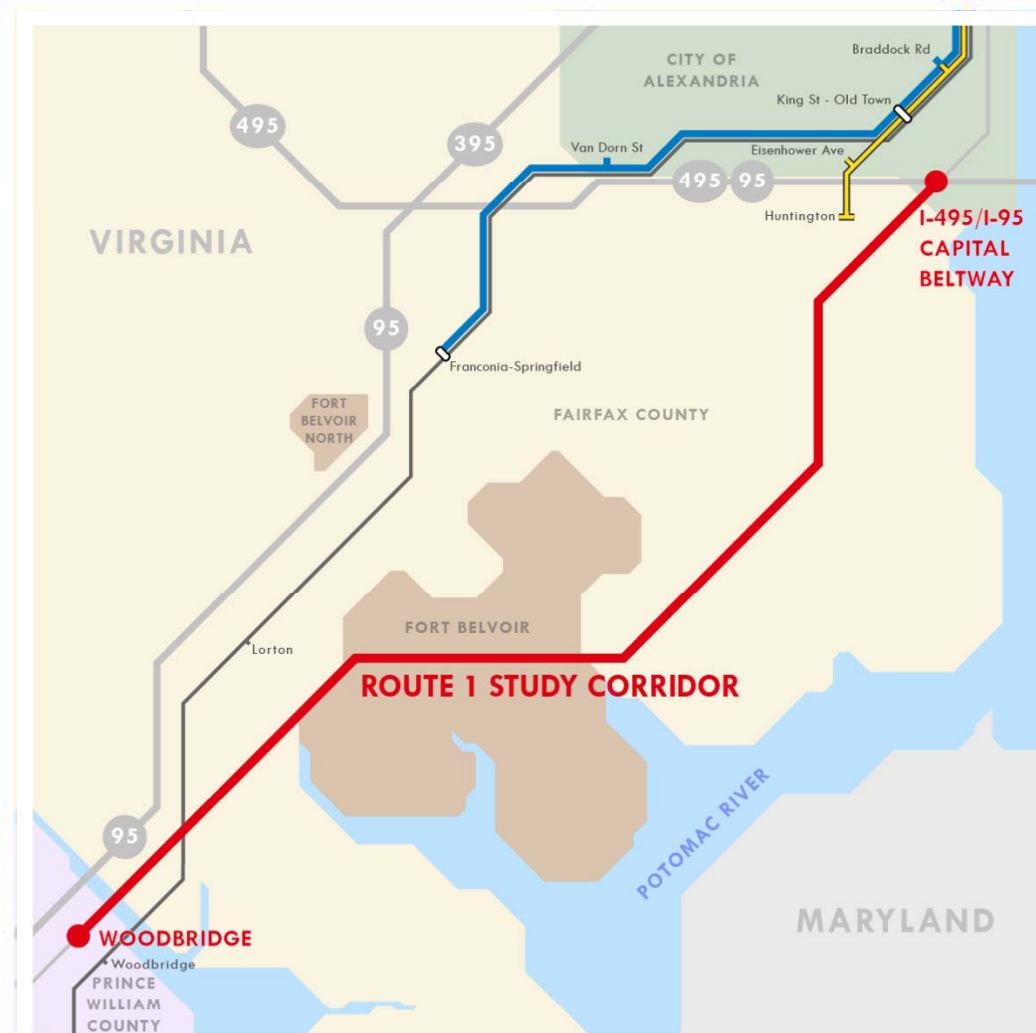
---

1. Introductions
2. Study background and overview
3. Public and community involvement
4. Project purpose and need
5. Discussion: stakeholder considerations
6. Upcoming meetings



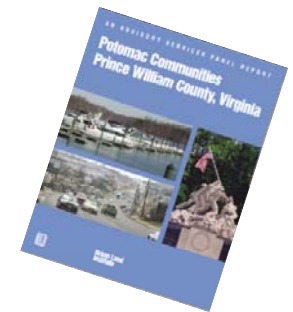
# Study Area

- 14- mile section of Route 1
- Extends from I-95/I-495 **Beltway**, through Fairfax County, to **Route 123** at **Woodbridge** in Prince William County



# Background

- **Senate Joint Resolution (SJ 292) – 2011:**
  - Instructed DRPT to review and evaluate all previous studies
  - Determine feasibility of transit improvements in a long segment of Route 1
- Route 1 has been the **subject of numerous roadway and transit-related studies and efforts** of over 8 different sponsors since 1998, including:
  - Fairfax County Comprehensive Plan
  - Mount Vernon District Long-Range Visioning Report
  - BRAC EIS / BRAC Existing Conditions Report
  - VDOT Location Study / Corridor Study
  - Fairfax Connector & PRTC TDP
  - WMATA Regional Bus Study
  - Richmond Highway Public Transportation Initiatives
  - BRT Feasibility Study (Prince William County)
  - Potomac Communities, Urban Land Use Institute Report
  - North Woodbridge Study Area Long Range Plan
  - WMATA US 1 Fort Belvoir to Huntington Metro Rail Station Transit Improvement Study
  - Prince William County BRAC Report
  - NVTC ~ Route 1 Corridor Bus Study 2001





# Study Background

- Corridor residents, businesses, and travelers seek improvements to transportation infrastructure and services
- Recent planning efforts have identified needs for transit and roadway improvements
- Planners recognize the need for mixed land use and local connectivity
- Decision makers have called for an alternatives analysis to test the viability of specific transportation and land use alternatives



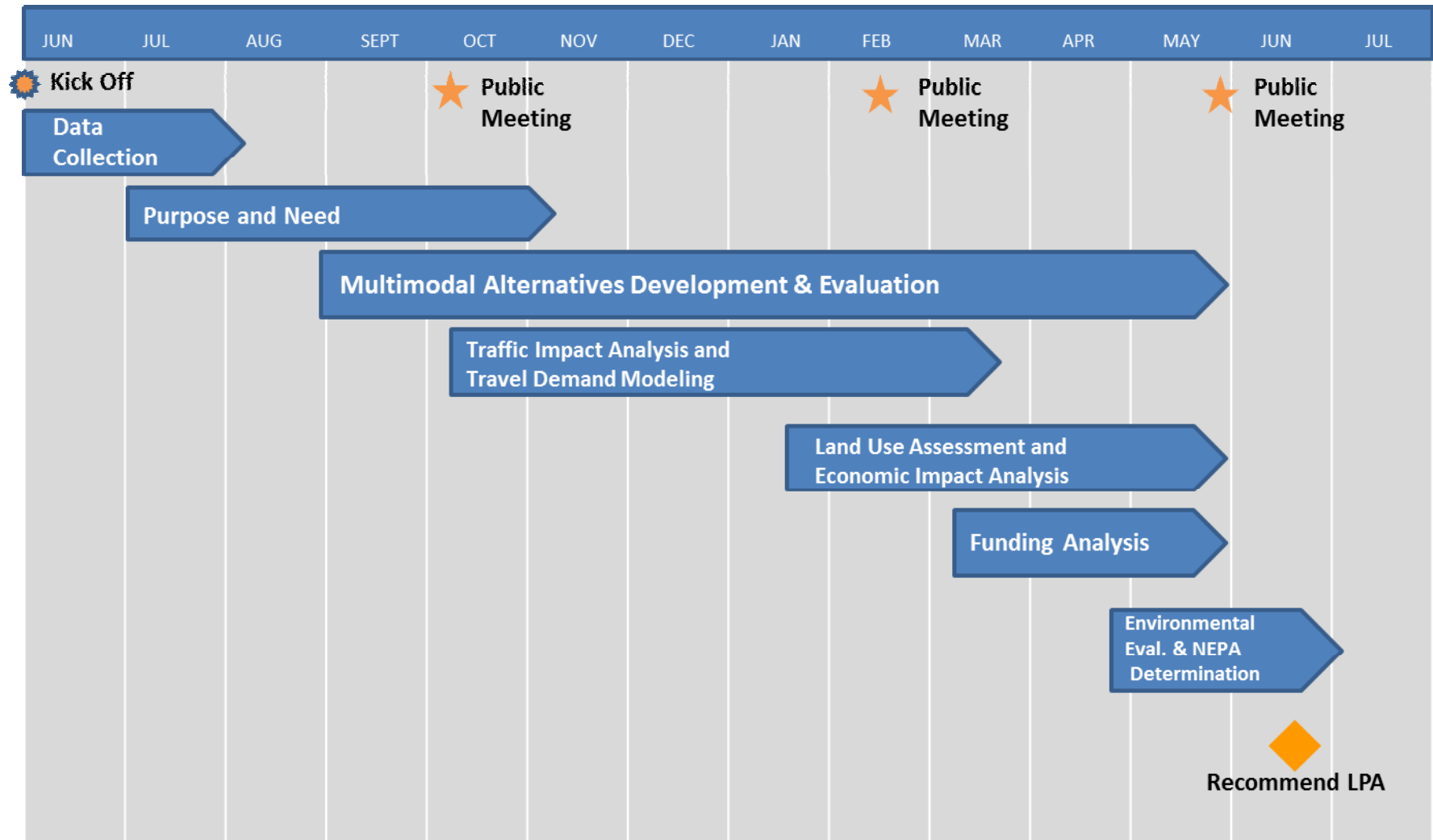
# Study Overview

- **Define** the key **mobility issues** and establish a “**needs statement**”
- Consider a **range of multimodal** transportation **solutions** to address the needs
- Conduct **transportation analysis** for the alternatives
- Conduct **land use analysis** to support the alternatives
- Perform **financial analysis** to test viability of the alternatives
- Recommend a **Locally Preferred Alternative (LPA)** and determine required level of **environmental documentation**

# Study Process

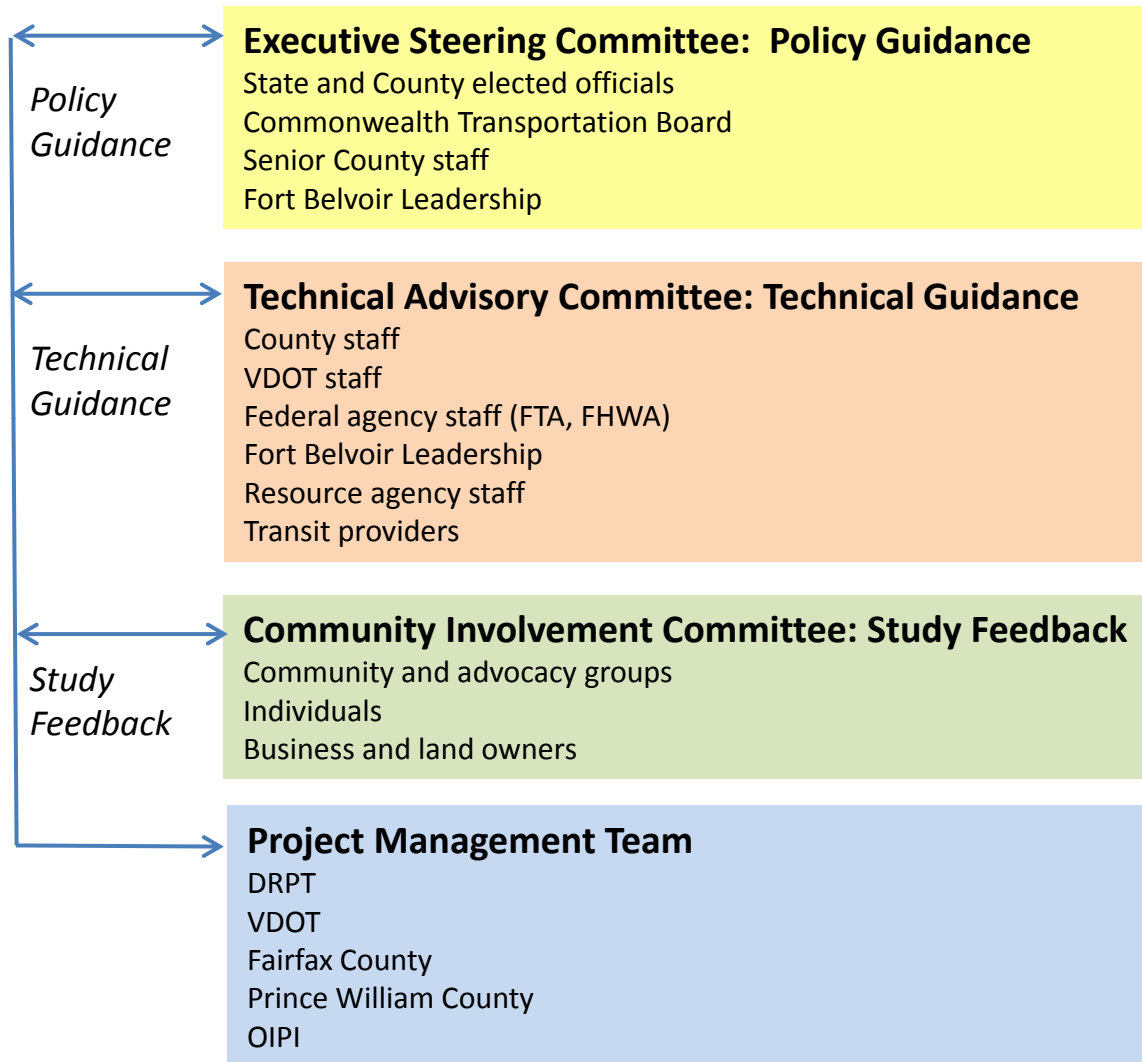


# Project Schedule





# Project Organization: Committee Roles



# Public and Stakeholder Involvement

- **Establish committees** to provide policy, technical, and stakeholder input
- Hold **interviews** and **small group discussions**
- Facilitate **3 public meetings**
- Participate in **community events** (festivals, schools, organizational meetings, etc.)
- Provide project updates through the **project website, social media, newsletters, flyers, and emails**



# Public Meetings

---

## Tentative Date

1 **Early  
October 2013**

## Tentative Agenda:

- Purpose and need, goals and objectives
- Initial set of alternatives
- Alternatives screening process

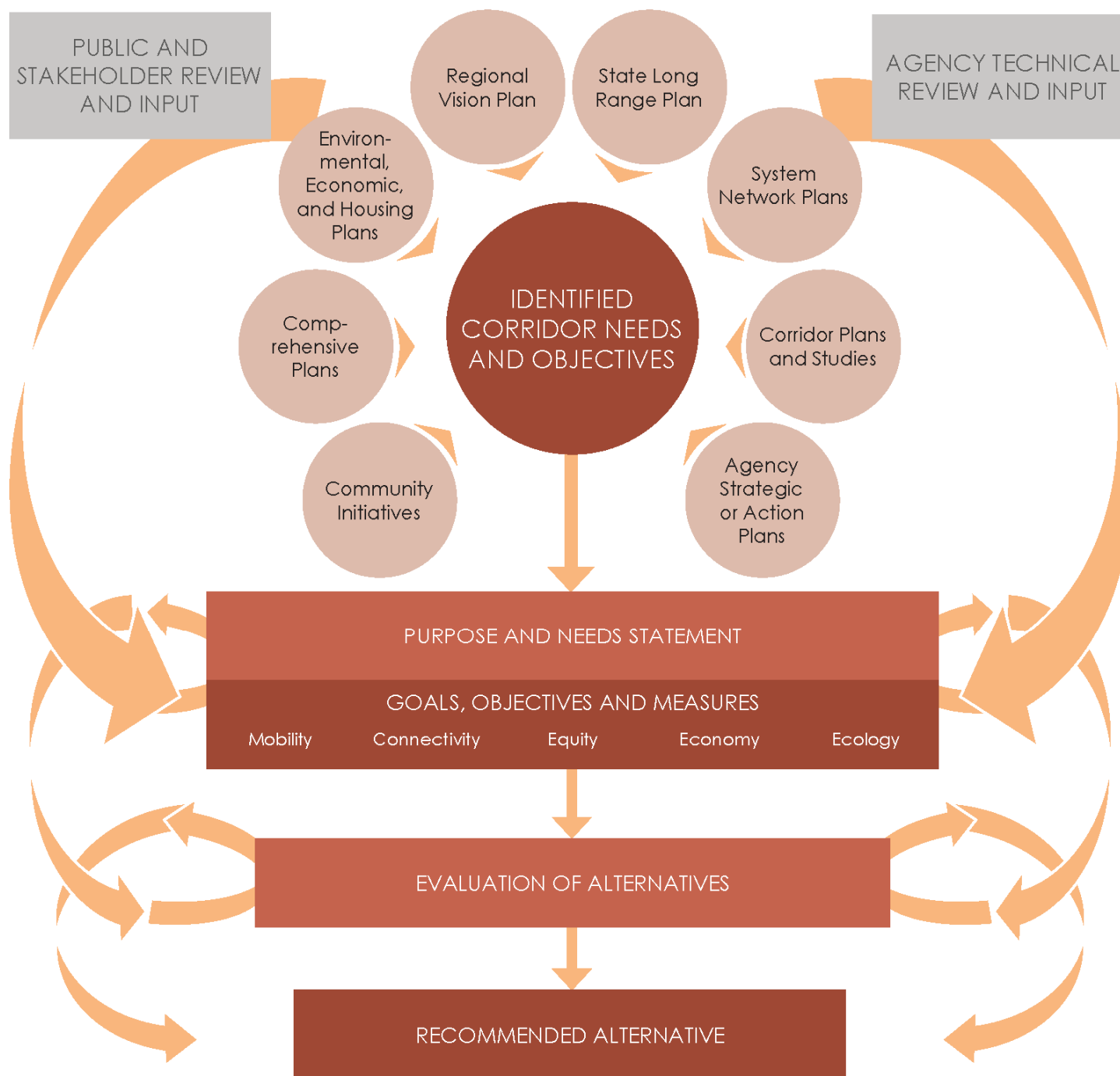
2 **February 2014**

- Refined alternatives
- Forecasting results
- Land use assessment

3 **May 2014**

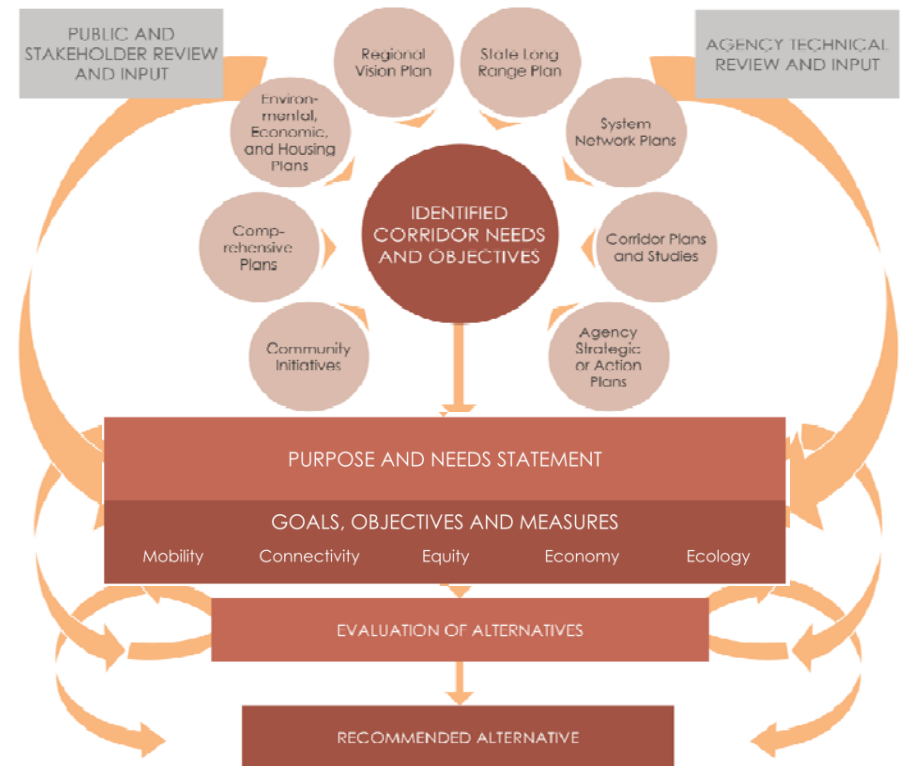
- Environmental scan
- Financial analysis
- Evaluation of alternatives
- Recommendation for Locally Preferred Alternative





# Stakeholder Priorities: Discussion

- What are the most **critical needs** in the study area?
- What **themes** must the study address to cover the range of stakeholder priorities?
- What are the most important **outcomes** of the Multimodal Alternatives Analysis?





# Upcoming Meetings

---

## July

Technical Advisory Committee (7/17)

## August

Project Management Team Meeting (8/12)

## September

Project Management Team Meeting (9/9)

Technical Advisory Committee (9/11)

Community Involvement Meeting (9/17)

**Executive Steering Committee (9/18)**

## October

Public Meeting (Early October)



---

# QUESTIONS?

## Route 1 Multimodal Alternatives Analysis

[www.Route1MultimodalAA.com](http://www.Route1MultimodalAA.com)